

## Product datasheet for **TA392934**

### **Eg5 (KIF11) Rabbit Polyclonal Antibody**

#### **Product data:**

Product Type:	Primary Antibodies
Applications:	WB
Recommended Dilution:	WB: 1:500~1:1000
Reactivity:	Human, Mouse, Rat
Host:	Rabbit
Isotype:	IgG
Clonality:	Polyclonal
Immunogen:	Synthetic phosphopeptide derived from human Eg5 around the phosphorylation site of Threonine 926
Specificity:	p-Eg5 (T926) pAb detects endogenous levels of Eg5 protein only when phosphorylated at Thr926.
Formulation:	Rabbit IgG, 1mg/ml in PBS with 0.02% sodium azide, 50% glycerol, pH7.2
Concentration:	1mg/ml
Conjugation:	Unconjugated
Storage:	Store at 4°C short term. Aliquot and store at -20°C long term. Avoid freeze-thaw cycles.
Stability:	1 year
Predicted Protein Size:	~ 120 kDa
Gene Name:	kinesin family member 11
Database Link:	<a href="#">Entrez Gene 3832 Human P52732</a>
Background:	Eg5 (also called kinesin-like protein 11 or Kif11) belongs to the kinesin-like family of motor proteins important in chromosome positioning, centrosome separation, and mitotic spindle formation. Phosphorylation of Eg5 by mitotic kinases regulates its activity by modulating its association with microtubules. Because anti-mitotic chemotherapeutic drugs, such as taxanes, target microtubules and have pleiotropic and sometimes toxic effects, drugs that target microtubule-associated proteins such as Eg5 are currently in development.

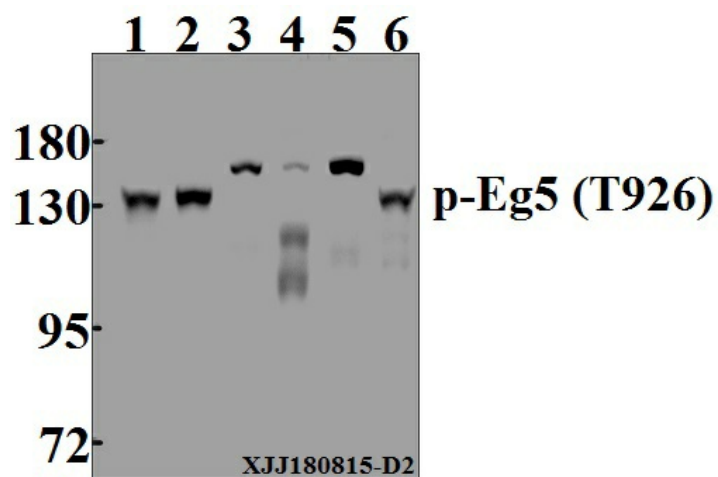


[View online »](#)

**Synonyms:** EG5; KIF11; Kinesin-like protein 1; Kinesin-like protein KIF11; Kinesin-like spindle protein HKSP; Kinesin-related motor protein Eg5; KNSL1; Thyroid receptor-interacting protein 5; TR-interacting protein 5; TRIP-5; TRIP5

**Note:** For research use only, not for use in diagnostic procedure.

**Product images:**



Western blot (WB) analysis of p-Eg5 (T926) pAb at 1:500 dilution Lane1:HCT116 whole cell lysate(40µg) Lane2:HepG2 whole cell lysate(40µg) Lane3:CT-26 whole cell lysate(40µg) Lane4:C6 whole cell lysate(40µg) Lane5:LOVO whole cell lysate(40µg) Lane6:MCF-7 whole cell lysate(40µg)