

Product datasheet for **TA392932S**

RON (MST1R) Rabbit Polyclonal Antibody

Product data:

Product Type:	Primary Antibodies
Applications:	WB
Recommended Dilution:	WB: 1:500~1:1000
Reactivity:	Human
Host:	Rabbit
Isotype:	IgG
Clonality:	Polyclonal
Immunogen:	Synthetic phosphopeptide derived from human Ron around the phosphorylation site of Serine 1394
Specificity:	Ron (phospho-S1394) polyclonal antibody detects endogenous levels of Ron protein only when phosphorylated at Ser1394.
Formulation:	Rabbit IgG, 1mg/ml in PBS with 0.02% sodium azide, 50% glycerol, pH7.2
Concentration:	1mg/ml
Conjugation:	Unconjugated
Storage:	Store at 4°C short term. Aliquot and store at -20°C long term. Avoid freeze-thaw cycles.
Stability:	1 year
Predicted Protein Size:	~ 145, 150 kDa
Gene Name:	macrophage stimulating 1 receptor
Database Link:	Entrez Gene 4486 Human Q04912



[View online »](#)

Background:

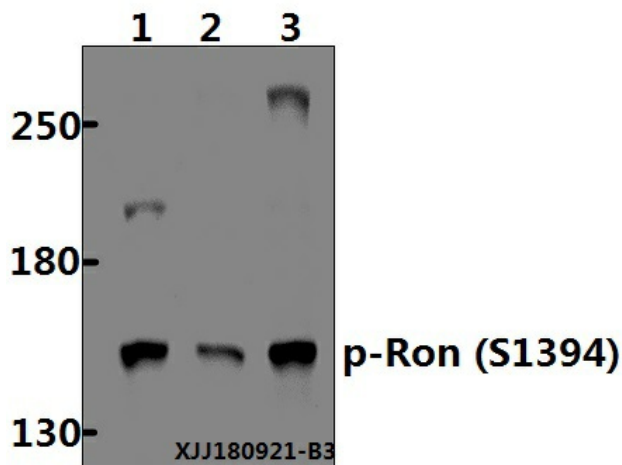
Ron is a member of the Met protooncogene family of receptor tyrosine kinases, which also includes Stk, c-Met, and c-Sea. The functional Ron is a heterodimer composed of a 40 kDa α chain and a 150 kDa β chain. Ron is initially synthesized in the cells as a single-chain, pro-Ron precursor that is cleaved into the two active chains. The α chain is completely extracellular, whereas the β chain traverses the cell membrane and contains the intracellular tyrosine kinase and regulatory elements. Ron mediates multiple signaling cascades that involve cell motility, adhesion, proliferation, and apoptosis. The signaling pathways activated downstream of Ron include the ras/mitogen-activated protein kinase (MAPK), phosphatidylinositol-3 kinase (PI3K)/Akt, and focal adhesion kinase (FAK) pathways. Ron activation can also significantly increase c-Src activity, a signaling intermediate involved in cell cycle progression, motility, angiogenesis and survival. The function of Ron has been shown to be important for embryological development as well as implicated in the progression and metastasis of tumors.

Synonyms:

CD136; CDw136; CD_antigen; Macrophage-stimulating protein receptor; MSP receptor; MST1R; p185-Ron; Protein-tyrosine kinase 8; PTK8; RON

Note:

For research use only, not for use in diagnostic procedure.

Product images:

Western blot (WB) analysis of Ron (phospho-S1394) polyclonal antibody at 1:500 dilution. Lane 1: A549 whole cell lysate (40 μ g), Lane 2: SK-OVCAR3 whole cell lysate (40 μ g), Lane 3: MCF-7 whole cell lysate (40 μ g).