

Product datasheet for **TA392930M**

Tuberin (TSC2) Rabbit Polyclonal Antibody

Product data:

Product Type:	Primary Antibodies
Applications:	WB
Recommended Dilution:	WB: 1:500~1:1000
Reactivity:	Human, Mouse, Rat
Host:	Rabbit
Isotype:	IgG
Clonality:	Polyclonal
Immunogen:	A synthetic peptide corresponding to residues in Human TSC2 around the phosphorylation site of Ser939.
Specificity:	TSC2 (phospho-S939) polyclonal antibody detects endogenous levels of TSC2 protein only when phosphorylated at Ser939.
Formulation:	Rabbit IgG, 1mg/ml in PBS with 0.02% sodium azide, 50% glycerol, pH7.2
Concentration:	1mg/ml
Conjugation:	Unconjugated
Storage:	Store at 4°C short term. Aliquot and store at -20°C long term. Avoid freeze-thaw cycles.
Stability:	1 year
Predicted Protein Size:	~ 180 kDa
Gene Name:	tuberous sclerosis 2
Database Link:	Entrez Gene 7249 Human P49815



[View online »](#)

Background:

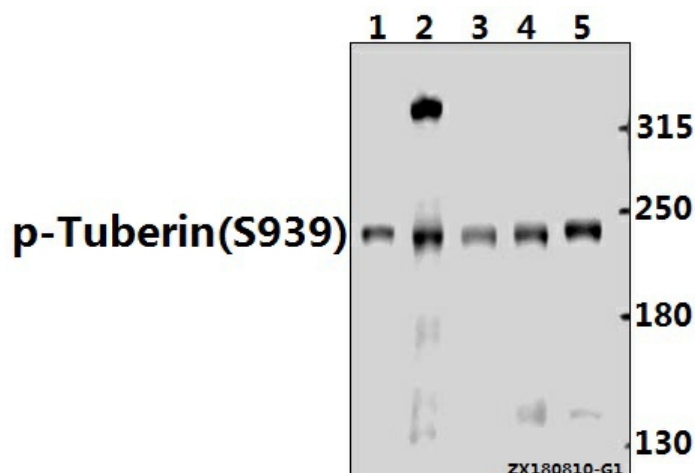
Tuberous sclerosis (TSC) is a human genetic disorder characterized by mental retardation and the widespread development of benign and infrequently malignant tumors in a variety of tissues. Two different genetic loci have been linked to TSC; one of these loci, the tuberous sclerosis-2 gene (TSC2), encodes a protein 1784 amino acids in length, called tuberin. Tuberin exhibits a region of limited homology to the catalytic domain of Rap1 GAP. Subcellular fractionation studies have shown tuberin to be predominantly localized in membrane fractions. Tuberin is capable of stimulating the intrinsic GTPase activity of Rap 1A, but not Rap 2, H-Ras, Rac or Rho. TSC2 maps to human chromosome 16 and is associated with several intragenic mutations in affected patients. The mouse homolog of the tuberin gene maps to chromosome 17.

Synonyms:

TSC2; TSC4; Tuberin; Tuberous sclerosis 2 protein

Note:

For research use only, not for use in diagnostic procedure.

Product images:


Western blot (WB) analysis of p-Tuberin (S939) pAb at 1:500 dilution Lane1:3T3-L1 whole cell lysate(40ug) Lane2:C6 whole cell lysate(40ug) Lane3:A2780 whole cell lysate(40ug) Lane4:A549 whole cell lysate(40ug) Lane5:HEK293T whole cell lysate(20ug)