

## Product datasheet for **TA392929S**

### Thymidine Kinase 1 (TK1) Rabbit Polyclonal Antibody

#### Product data:

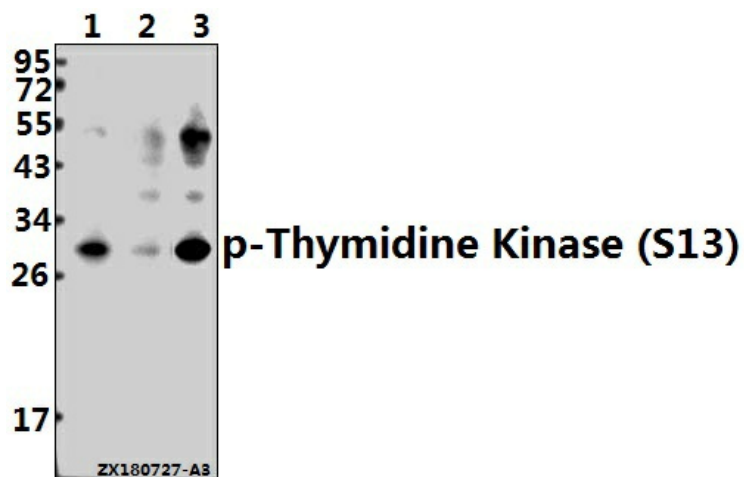
Product Type:	Primary Antibodies
Applications:	WB
Recommended Dilution:	WB: 1:500~1:1000
Reactivity:	Human
Host:	Rabbit
Isotype:	IgG
Clonality:	Polyclonal
Immunogen:	Synthetic peptide derived from human TK around the phosphorylation site of S13.
Specificity:	TK (phospho-S13) polyclonal antibody detects endogenous levels of Thymidine Kinase protein only when phosphorylated at Ser13.
Formulation:	Rabbit IgG, 1mg/ml in PBS with 0.02% sodium azide, 50% glycerol, pH7.2
Concentration:	1mg/ml
Conjugation:	Unconjugated
Storage:	Store at 4°C short term. Aliquot and store at -20°C long term. Avoid freeze-thaw cycles.
Stability:	1 year
Predicted Protein Size:	~ 25 kDa
Gene Name:	thymidine kinase 1
Database Link:	<a href="#">Entrez Gene 7083 Human P04183</a>
Background:	Thymidine Kinase (TK1) is a highly conserved phosphotransferase that is present in most living cells. Thymidine Kinase catalyzes the phosphorylation reaction: deoxythymidine + ATP = deoxythymidine 5'-phosphate + ADP; it is thus involved in the reaction chain to introduce deoxythymidine into the DNA. Thymidine kinase is required for the action of many antiviral drugs, such as azidothymidine (AZT), and is also used to select hybridoma cell lines in the production of monoclonal antibodies. Thymidine Kinase has many clinical applications as it is only present in anticipation of cell division.
Synonyms:	Thymidine Kinase; TK1; TK2



[View online »](#)

Note: For research use only, not for use in diagnostic procedure.

Product images:



Western blot (WB) analysis of p-Thymidine Kinase (S13) pAb at 1:500 dilution Lane1:Myla2059 whole cell lysate(40ug) Lane2:HuT78 whole cell lysate(40ug) Lane3:K562 whole cell lysate(40ug)