

Product datasheet for TA392928M

RPS6 Rabbit Polyclonal Antibody

Product data:

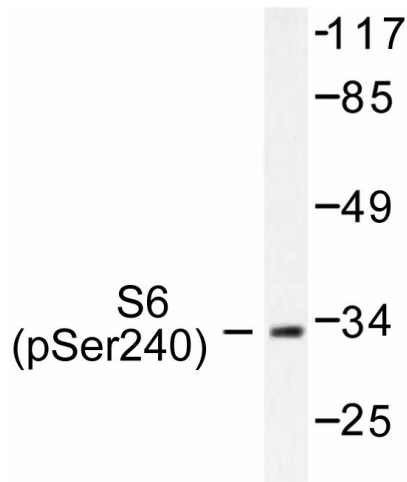
Product Type:	Primary Antibodies
Applications:	WB
Recommended Dilution:	WB: 1:500~1:1000 IHC: 1:50~1:200 IF: 1:50~1:200
Reactivity:	Human, Mouse, Rat
Host:	Rabbit
Isotype:	IgG
Clonality:	Polyclonal
Immunogen:	Synthetic phosphopeptide derived from human Ribosomal Protein S6 around the phosphorylation site of Serine 240.
Specificity:	p-Ribosomal Protein S6 (S240) polyclonal antibody detects endogenous levels of Ribosomal Protein S6 protein only when phosphorylated at Ser240
Formulation:	Rabbit IgG, 1mg/ml in PBS with 0.02% sodium azide, 50% glycerol, pH7.2
Concentration:	1mg/ml
Conjugation:	Unconjugated
Storage:	Store at 4°C short term. Aliquot and store at -20°C long term. Avoid freeze-thaw cycles.
Stability:	1 year
Predicted Protein Size:	~ 29 kDa
Gene Name:	ribosomal protein S6
Database Link:	Entrez Gene 6194 Human P62753
Background:	Ribosomal protein S6 is a component of the small 40S ribosomeal subunit and belongs to the S6E family of ribosomal proteins. It is the major substrate of protein kinases in the ribosome, with subsets of five C-terminal serine residues phosphorylated by different protein kinases. Phosphorylation is induced by a wide range of stimuli, including growth factors, tumor-promoting agents, and mitogens. Dephosphorylation occurs at growth arrest. The protein may contribute to the control of cell growth and proliferation through the selective translation of particular classes of mRNA. As is typical for genes encoding ribosomal proteins, there are multiple processed pseudogenes of this gene dispersed through the genome.


[View online »](#)

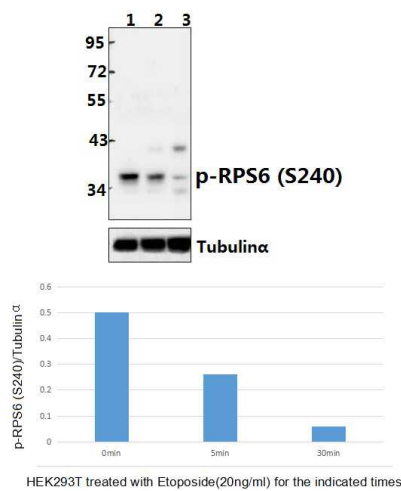
Synonyms: 40S ribosomal protein S6; OK/SW-cl.2; Phosphoprotein NP33; RPS6

Note: For research use only, not for use in diagnostic procedure.

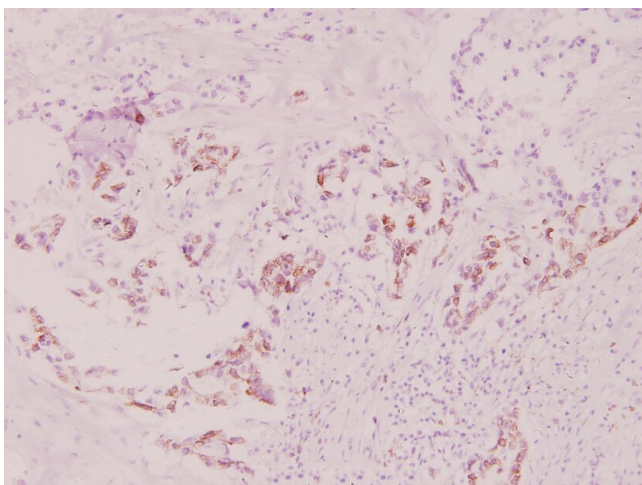
Product images:



Western blot (WB) analysis of RPS6 (phospho-S240) polyclonal antibody at 1:500 dilution
Lane1:Hela whole cell lysate(40µg) Lane2:Hela treated with serum starved(24h) whole cell lysate(40µg) Lane3:PC12 whole cell lysate(40µg) Lane4:PC12 treated with serum starved(24h) whole cell lysate(40µg)



Western blot (WB) analysis of RPS6 (phospho-S240) pAb at 1:500 dilution Lane1:HEK293T whole cell lysate(40ug) Lane2:HEK293T treated with insulin(20ng/ml) for 15 minutes whole cell lysate(40ug) Lane3:HEK293T treated with insulin(20ng/ml) for 30 minutes whole cell lysate(40ug)



Immunohistochemistry (IHC) analyzes of p-RPS6 (S240) pAb in paraffin-embedded human breast carcinoma tissue at 1:100.