

Product datasheet for **TA392926M**

Parkin (PARK2) Rabbit Polyclonal Antibody

Product data:

Product Type:	Primary Antibodies
Applications:	WB
Recommended Dilution:	WB: 1:500~1:1000
Reactivity:	Human
Host:	Rabbit
Isotype:	IgG
Clonality:	Polyclonal
Immunogen:	Synthetic peptide derived from human Parkin around the phosphorylation site of S131.
Specificity:	Parkin (phospho-S131) polyclonal antibody detects endogenous levels of Parkin protein only when phosphorylated at Ser131.
Formulation:	Rabbit IgG, 1mg/ml in PBS with 0.02% sodium azide, 50% glycerol, pH7.2
Concentration:	1mg/ml
Conjugation:	Unconjugated
Storage:	Store at 4°C short term. Aliquot and store at -20°C long term. Avoid freeze-thaw cycles.
Stability:	1 year
Predicted Protein Size:	~ 52 kDa
Gene Name:	parkin RBR E3 ubiquitin protein ligase
Database Link:	Entrez Gene 5071 Human O60260

[View online »](#)

Background:

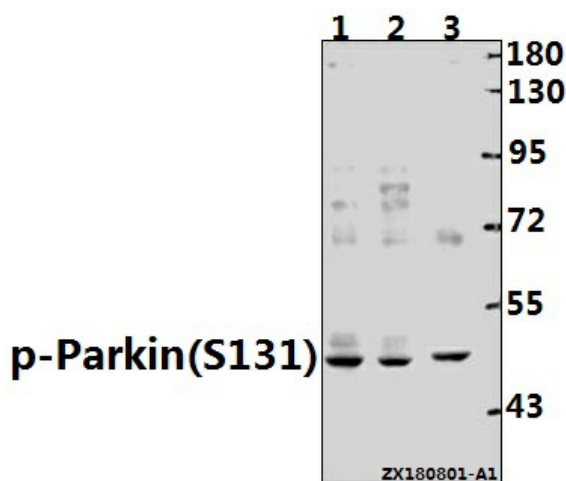
Parkin is a zinc-finger protein that is related to ubiquitin at the amino terminus. The wild type Parkin gene, which maps to human chromosome 6q25.2- 27, encodes a 465 amino acid full-length protein that is expressed as multiple isoforms ranging from 50-58 kDa. Mutations in the Parkin gene are responsible for utosomal recessive juvenile Parkinson's disease and commonly involve deletions of exons 3-5. In humans, Parkin is expressed in a subset of cells of the basal ganglia, midbrain, cerebellum and cerebral cortex, and is subject to alternative splicing in different tissues. Parkin expression is also high in the brainstem of mice, with the majority of immunopositive cells being neurons. The Parkin gene has been identified in a diverse group of organisms including mammals, birds, frog and fruit flies, suggesting that analogous functional roles of the Parkin protein may have been highly conserved during the course of evolution

Synonyms:

E3 ubiquitin-protein ligase parkin; PARK2; Parkinson disease protein 2; Parkinson juvenile disease protein 2; PRKN

Note:

For research use only, not for use in diagnostic procedure.

Product images:


Western blot (WB) analysis of p-Parkin (S131) pAb at 1:500 dilution Lane1:MCF-7 whole cell lysate(40ug) Lane2:HCT116 whole cell lysate(40ug) Lane3:SGC7901 whole cell lysate(40ug)