

## Product datasheet for **TA392925**

### LAT Rabbit Polyclonal Antibody

#### Product data:

Product Type:	Primary Antibodies
Applications:	WB
Recommended Dilution:	WB: 1:500~1:1000
Reactivity:	Human, Mouse, Rat
Host:	Rabbit
Isotype:	IgG
Clonality:	Polyclonal
Immunogen:	Synthetic phosphopeptide derived from human LAT (Isoform Short) around the phosphorylation site of Tyrosine 191.
Specificity:	p-LAT (Y191) polyclonal antibody detects endogenous levels of human LAT (Isoform Short) only when phosphorylated at Tyr191, and detects LAT (Isoform Long) only when phosphorylated at Tyr220.
Formulation:	Rabbit IgG, 1mg/ml in PBS with 0.02% sodium azide, 50% glycerol, pH7.2
Concentration:	1mg/ml
Conjugation:	Unconjugated
Storage:	Store at 4°C short term. Aliquot and store at -20°C long term. Avoid freeze-thaw cycles.
Stability:	1 year
Predicted Protein Size:	~ 38 kDa
Gene Name:	linker for activation of T-cells
Database Link:	<a href="#">Entrez Gene 27040 Human O43561</a>



[View online »](#)

**Background:**

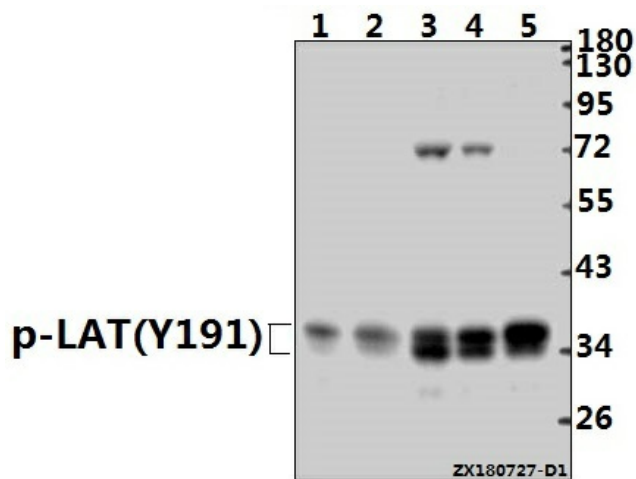
LAT, a transmembrane adaptor protein expressed in T, NK and mast cells, is an important mediator for T cell receptor (TCR) signaling. Upon TCR engagement, activated Zap-70 phosphorylates LAT at multiple conserved tyrosine residues within SH2 binding motifs, exposing these motifs as the docking sites for downstream signaling targets. The phosphorylation of LAT at Tyr171 and 191 enables the binding of Grb2, Gads/SLP-76, PLCgamma1 and PI3 kinase through their SH2 domain and translocates them to the membrane. This process eventually leads to activation of the corresponding signaling pathways.

**Synonyms:**

36 kDa phospho-tyrosine adapter protein; LAT; Linker for activation of T-cells family member 1; p36-38; pp36

**Note:**

For research use only, not for use in diagnostic procedure.

**Product images:**

Western blot (WB) analysis of p-LAT (Y191) pAb at 1:1000 dilution Lane1:H9C2 whole cell lysate(40ug) Lane2:RAW264.7 whole cell lysate(40ug) Lane3:K562 whole cell lysate(20ug) Lane4:Myla2059 whole cell lysate(20ug) Lane5:HuT78 whole cell lysate(20ug)