

## Product datasheet for **TA392924M**

### Cytokeratin 8 (KRT8) Rabbit Polyclonal Antibody

#### Product data:

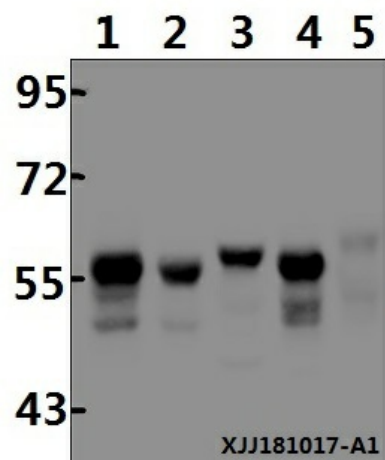
|                         |   |
|-------------------------|---|
| Product Type:           | Primary Antibodies  |
| Applications:           | WB  |
| Recommended Dilution:   | WB: 1:500~1:1000  |
| Reactivity:             | Human, Mouse  |
| Host:                   | Rabbit  |
| Isotype:                | IgG   |
| Clonality:              | Polyclonal  |
| Immunogen:              | Synthetic phosphopeptide derived from human Casein Kinase II $\beta$ around the phosphorylation site of Serine 209  |
| Specificity:            | Cytokeratin 8 (phospho-S432) polyclonal antibody detects endogenous levels of Cytokeratin 8 protein only when phosphorylated at Ser432.   |
| Formulation:            | Rabbit IgG, 1mg/ml in PBS with 0.02% sodium azide, 50% glycerol, pH7.2  |
| Concentration:          | 1mg/ml  |
| Conjugation:            | Unconjugated  |
| Storage:                | Store at 4°C short term. Aliquot and store at -20°C long term. Avoid freeze-thaw cycles.  |
| Stability:              | 1 year  |
| Predicted Protein Size: | ~ 55 kDa  |
| Gene Name:              | keratin 8   |
| Database Link:          | <a href="#">Entrez Gene 3856 Human P05787</a>   |
| Background:             | Keratins (cytokeratins) are intermediate filament proteins that are mainly expressed in epithelial cells. Keratin heterodimers composed of an acidic keratin (or type I keratin, keratins 9 to 23) and a basic keratin (or type II keratin, keratins 1 to 8) assemble to form filaments. Keratin isoforms demonstrate tissue and differentiation-specific profiles that make them useful as research biomarkers. Research studies have shown that mutations in keratin genes are associated with skin disorders, liver and pancreatic diseases, and inflammatory intestinal diseases. |
| Synonyms:               | Casein kinase II subunit beta; CK2N, G5A; CK II beta; CSNK2B; Phosvitin; Protein G5a  |



[View online »](#)

Note: For research use only, not for use in diagnostic procedure.

Product images:



Western blot (WB) analysis of Cytokeratin 8 (phospho-S432) polyclonal antibody at 1:500 dilution Lane1:PC3 whole cell lysate(20µg) Lane2:MCF-7 whole cell lysate(20µg) Lane3:HeLa whole cell lysate(20µg) Lane4:A549 whole cell lysate(20µg) Lane5:The Lung tissue lysate of Mouse(20µg)