

Product datasheet for **TA392923S**

EGFR Rabbit Polyclonal Antibody

Product data:

Product Type:	Primary Antibodies
Applications:	WB
Recommended Dilution:	WB: 1:500~1:1000 IHC: 1:50~1:200 IF: 1:50~1:200
Reactivity:	Human, Mouse, Rat
Host:	Rabbit
Isotype:	IgG
Clonality:	Polyclonal
Immunogen:	Synthetic phosphopeptide derived from human EGFR around the phosphorylation site of Tyrosine 992.
Specificity:	p-EGFR (Y992) polyclonal antibody detects endogenous levels of EGFR protein only when phosphorylated at Tyr992 (removal of the signal peptide).
Formulation:	Rabbit IgG, 1mg/ml in PBS with 0.02% sodium azide, 50% glycerol, pH7.2
Concentration:	1mg/ml
Conjugation:	Unconjugated
Storage:	Store at 4°C short term. Aliquot and store at -20°C long term. Avoid freeze-thaw cycles.
Stability:	1 year
Predicted Protein Size:	~ 175 kDa
Gene Name:	epidermal growth factor receptor
Database Link:	Entrez Gene 1956 Human P00533
Background:	Epidermal growth factor mediates its effects on cell growth through its interaction with a cell surface glycoprotein designated the EGF receptor. Binding of EGF or TGF α to the EGF receptor activates tyrosine-specific protein kinase activity intrinsic to the EGF receptor. The carboxy-terminal tyrosine residues on EGFR, Tyr 1068 and Tyr 1173, are the major sites of autophosphorylation, which occurs as a result of EGF binding. Phosphorylation of Tyr 992, Tyr 1068 and Tyr 1086 is required for conformational change in the C-terminal tail of the EGF receptor. EGFR regulates Actin filament accumulation at the plasma membrane and Cdc42 stimulates formation of filopodia.

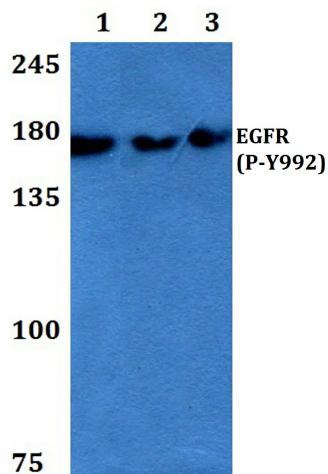


[View online »](#)

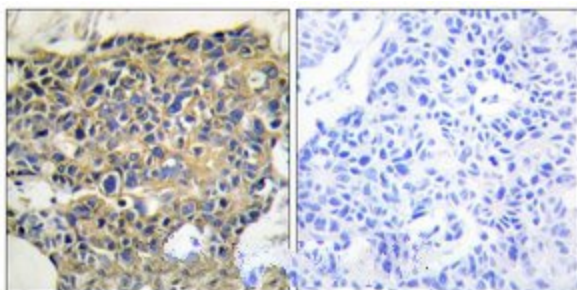
Synonyms: EC=2.7.10.1; EGFR; Epidermal growth factor receptor; ERBB; ERBB1; HER1; Proto-oncogene c-ErbB-1; Receptor tyrosine-protein kinase erbB-1

Note: For research use only, not for use in diagnostic procedure.

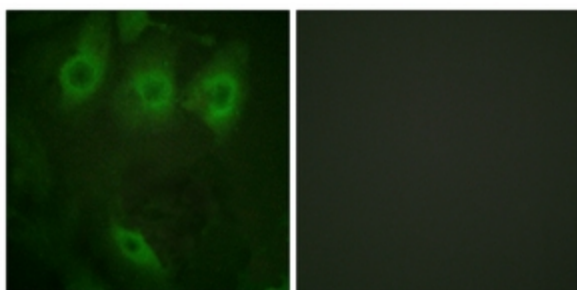
Product images:



Western blot (WB) analysis of p-EGFR (Y992) pAb at 1:500 dilution Lane1:HCC827 whole cell lysate(20ug) Lane2:A549 whole cell lysate(40ug)



Immunohistochemistry analysis of paraffin-embedded human breast carcinoma, using p-EGFR (Y992) pAb. The picture on the right is treated with the synthesized peptide.



Immunofluorescence analysis of HeLa cells, using p-EGFR (Y992) pAb. The picture on the right is treated with the synthesized peptide.