

## Product datasheet for TA392922M

### Casein Kinase 2 beta (CSNK2B) Rabbit Polyclonal Antibody

#### Product data:

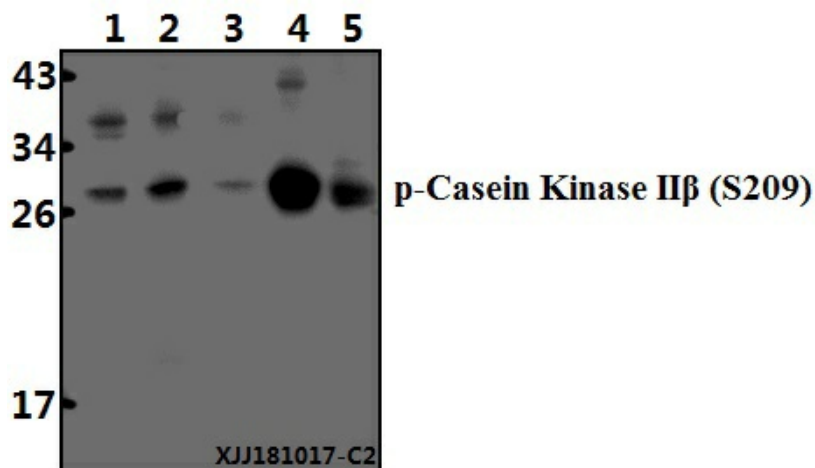
Product Type:	Primary Antibodies
Applications:	WB
Recommended Dilution:	WB: 1:500~1:1000
Reactivity:	Human, Mouse, Rat
Host:	Rabbit
Isotype:	IgG
Clonality:	Polyclonal
Immunogen:	Synthetic phosphopeptide derived from human Cytokeratin 8 around the phosphorylation site of Serine 432
Specificity:	Casein Kinase II $\beta$ (phospho-S209) polyclonal antibody detects endogenous levels of Casein Kinase II $\beta$ protein only when phosphorylated at Ser209.
Formulation:	Rabbit IgG, 1mg/ml in PBS with 0.02% sodium azide, 50% glycerol, pH7.2
Concentration:	1mg/ml
Conjugation:	Unconjugated
Storage:	Store at 4°C short term. Aliquot and store at -21°C long term. Avoid freeze-thaw cycles.
Stability:	1 year
Predicted Protein Size:	~ 27 kDa
Gene Name:	casein kinase 2 beta
Database Link:	<a href="#">Entrez Gene 1460 Human P67870</a>
Background:	CK2 (formerly called Casein Kinase II) is a highly conserved protein kinase with more than 300 substrates regulating cell growth, cell death, and cell survival. CK2 has been implicated in the response to UV irradiation-induced DNA damage, targeting XRCC1 and BRCA1 as well as regulating p53 tumor suppressor protein functions. Furthermore, CK2 plays a key role in NF- $\kappa$ B activation.
Synonyms:	CK-8; CYK8; Cytokeratin-8; K8; Keratin, type II cytoskeletal 8; Keratin-8; KRT8; Type-II keratin Kb8



[View online »](#)

**Note:** For research use only, not for use in diagnostic procedure.

## Product images:



Western blot (WB) analysis of Casein Kinase II $\beta$  (phospho-S209) polyclonal antibody at 1:500 dilution Lane1:HEK293T whole cell lysate(40 $\mu$ g) Lane2:Panc1 whole cell lysate(40 $\mu$ g) Lane3:U-87MG whole cell lysate(40 $\mu$ g) Lane4:The Brain tissue lysate of Rat(40 $\mu$ g) Lane5:The Kidney tissue lysate of Mouse(40 $\mu$ g)