

Product datasheet for **TA392920S**

PRAS40 (AKT1S1) Rabbit Polyclonal Antibody

Product data:

Product Type:	Primary Antibodies
Applications:	WB
Recommended Dilution:	WB: 1:500~1:1000
Reactivity:	Human, Mouse, Rat
Host:	Rabbit
Isotype:	IgG
Clonality:	Polyclonal
Immunogen:	Synthetic phosphopeptide derived from human PRAS40 around the phosphorylation site of Threonine 246.
Specificity:	p-PRAS40 (T246) polyclonal antibody detects endogenous levels of PRAS40 only when phosphorylated at Thr246.
Formulation:	Rabbit IgG, 1mg/ml in PBS with 0.02% sodium azide, 50% glycerol, pH7.2
Concentration:	1mg/ml
Conjugation:	Unconjugated
Storage:	Store at 4°C short term. Aliquot and store at -20°C long term. Avoid freeze-thaw cycles.
Stability:	1 year
Predicted Protein Size:	~ 40 kDa
Gene Name:	AKT1 substrate 1
Database Link:	Entrez Gene 84335 Human Q96B36



[View online »](#)

Background:

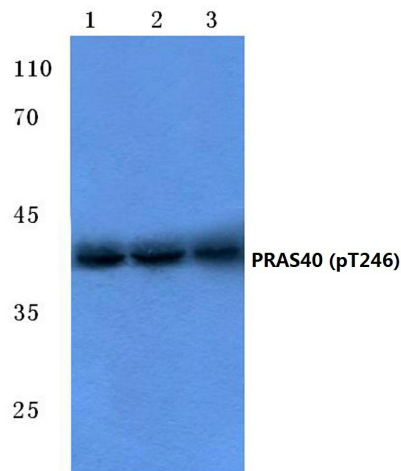
Akt, also known as protein kinase B, is one of the major downstream targets of the phosphatidylinositol 3-kinase pathway. This protein kinase has been implicated in insulin signaling, stimulation of cellular growth, inhibition of apoptosis and transformation of cells. The proline-rich Akt substrate PRAS40, also designated AKT1S1, becomes phosphorylated by activated Akt on Ser or Thr residues in the motif RXRXX(S/T). Phosphorylated PRAS40 subsequently binds 14-3-3 in a sequence-specific manner, thereby inducing such changes as alteration of protein subcellular localization and regulation of intrinsic enzymatic activity. Studies also suggest that PRAS40 phosphorylation and its interaction with pAkt and 14-3-3 may play an important role in neuroprotection mediated by NGF in apoptotic neuronal cell death after cerebral ischemia. PRAS40 maps to human chromosome 19q13.33.

Synonyms:

40 kDa proline-rich AKT substrate; AKT1S1; PRAS40; Proline-rich AKT1 substrate 1

Note:

For research use only, not for use in diagnostic procedure.

Product images:

Western blot (WB) analysis of p-PRAS40 (T246) polyclonal antibody at 1:500 dilution. Lane 1: LO2 cell lysate; Lane 2: Raw264.7 cell lysate; Lane 3: NIH-3T3 cell lysate.