

## Product datasheet for **TA392919M**

### Cardiac Troponin I (TNNI3) Rabbit Polyclonal Antibody

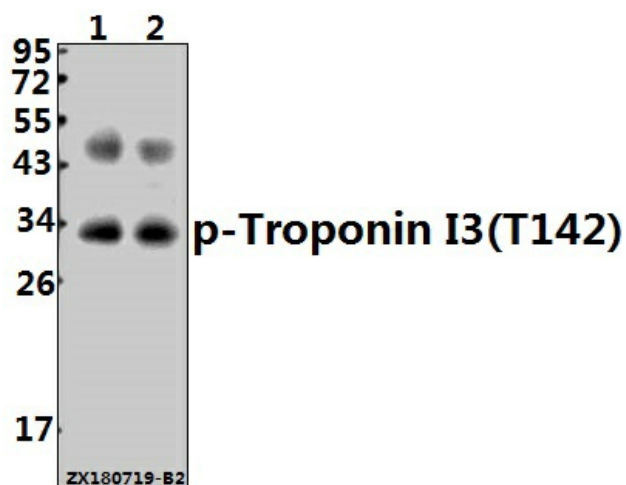
#### Product data:

Product Type:	Primary Antibodies
Applications:	WB
Recommended Dilution:	WB: 1:500~1:1000
Reactivity:	Human, Mouse, Rat
Host:	Rabbit
Isotype:	IgG
Clonality:	Polyclonal
Immunogen:	Synthetic phosphopeptide derived from human Troponin I3 around the phosphorylation site of Thr142.
Specificity:	Troponin I3 (phospho-T142) polyclonal antibody detects endogenous levels of Troponin I3 protein only when phosphorylated at Thr142.
Formulation:	Rabbit IgG, 1mg/ml in PBS with 0.02% sodium azide, 50% glycerol, pH7.2
Concentration:	1mg/ml
Conjugation:	Unconjugated
Storage:	Store at 4°C short term. Aliquot and store at -20°C long term. Avoid freeze-thaw cycles.
Stability:	1 year
Predicted Protein Size:	~ 28 kDa
Gene Name:	troponin I3, cardiac type
Database Link:	<a href="#">Entrez Gene 7137 Human P19429</a>
Background:	Troponin I is part of a heteromeric complex playing an important role in the regulation of skeletal and cardiac muscle contraction. It consists of three subunits, troponin I (TnI), troponin T (TnT) and troponin C (TnC). Each subunit is responsible for part of troponin complex function. TnI inhibits ATPase activity of acto myosin and TnT and TnI are present in cardiac muscles in different forms than in skeletal muscles. Only one tissue specific isoform of TnI is described for cardiac muscle tissue (cTnI) and this is expressed only in myocardium.
Synonyms:	Cardiac troponin I; TNNC1; TNNI3; Troponin I, cardiac muscle

[View online »](#)

**Note:** For research use only, not for use in diagnostic procedure.

**Product images:**



Western blot (WB) analysis of p-Troponin I3 (T142) pAb at 1:500 dilution Lane1:The Heart tissue lysate of Mouse(40ug) Lane2:The Heart tissue lysate of Rat(40ug)