

Product datasheet for **TA392910S**

Integrin beta 1 (ITGB1) Rabbit Polyclonal Antibody

Product data:

Product Type:	Primary Antibodies
Applications:	WB
Recommended Dilution:	WB: 1:500~1:1000 IHC: 1:50~1:200
Reactivity:	Human, Mouse, Rat
Host:	Rabbit
Isotype:	IgG
Clonality:	Polyclonal
Immunogen:	Synthetic phosphopeptide derived from human Integrin β 1 around the phosphorylation site of Threonine 788.
Specificity:	p-Integrin β 1 (T788) polyclonal antibody detects endogenous levels of Integrin β 1 protein only when phosphorylated at Thr788
Formulation:	Rabbit IgG, 1mg/ml in PBS with 0.02% sodium azide, 50% glycerol, pH7.2
Concentration:	1mg/ml
Conjugation:	Unconjugated
Storage:	Store at 4°C short term. Aliquot and store at -20°C long term. Avoid freeze-thaw cycles.
Stability:	1 year
Predicted Protein Size:	~ 115 kDa
Gene Name:	integrin subunit beta 1
Database Link:	Entrez Gene 3688 Human P05556

[View online »](#)

Background:

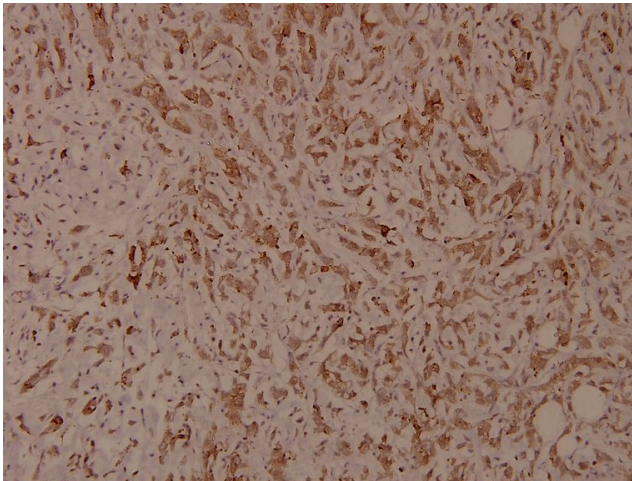
Integrins are heterodimers composed of noncovalently associated transmembrane α and β subunits. The 16 α and 8 β subunits heterodimerize to produce more than 20 different receptors. Most integrin receptors bind ligands that are components of the extracellular matrix, including Fibronectin, collagen and vitronectin. Certain integrins can also bind to soluble ligands, such as fibrinogen, or to counterreceptors on adjacent cells such as the intracellular adhesion molecules (ICAMs), leading to aggregation of cells. Ligands serve to cross-link or cluster integrins by binding to adjacent integrin receptors; both receptor clustering and ligand occupancy are necessary for the activation of integrin-mediated responses. In addition to mediating cell adhesion and cytoskeletal organization, integrins function as signaling receptors. Signals transduced by integrins play a role in many biological processes, including cell growth, differentiation, migration and apoptosis.

Synonyms:

Integrin beta-1, Fibronectin receptor subunit beta, Glycoprotein IIa, GPIIb, VLA-4 subunit beta, CD29, ITGB1, FNRB, MDF2, MSK12

Note:

For research use only, not for use in diagnostic procedure.

Product images:


Immunohistochemistry (IHC) analyzes of p-Integrin β 1 (T788) pAb in paraffin-embedded human breast carcinoma tissue at 1:100.