

## Product datasheet for TA392909

### Rabbit Polyclonal Antibody

#### Product data:

Product Type:	Primary Antibodies
Applications:	WB
Recommended Dilution:	WB: 1:500~1:1000 IHC: 1:50~1:200
Reactivity:	Human, Mouse, Rat
Host:	Rabbit
Isotype:	IgG
Clonality:	Polyclonal
Immunogen:	Synthetic phosphopeptide derived from human AKT1 around the phosphorylation site of Threonine 450.
Specificity:	p-AKT (T450) polyclonal antibody detects endogenous levels of AKT1 only when phosphorylated at Thr450. This antibody also recognizes AKT2 and AKT3 when phosphorylated at the corresponding residues.
Formulation:	Rabbit IgG, 1mg/ml in PBS with 0.02% sodium azide, 50% glycerol, pH7.2
Concentration:	1mg/ml
Conjugation:	Unconjugated
Storage:	Store at 4°C short term. Aliquot and store at -20°C long term. Avoid freeze-thaw cycles.
Stability:	1 year
Predicted Protein Size:	~ 60 kDa
Database Link:	<a href="#">P31749/P31751/Q9Y243</a>
Background:	AKT, also known as protein kinase B (PKB), is a 57 kDa serine/threonine protein kinase. There are three mammalian isoforms of Akt: AKT1 (PKB alpha), AKT2 (PKB beta) and AKT3 (PKB gamma) with AKT2 and AKT3 being approximately 82% identical with the AKT1 isoform. Each isoform has a pleckstrin homology (PH) domain, a kinase domain and a carboxy terminal regulatory domain. AKT was originally cloned from the retrovirus AKT8, and is a key regulator of many signal transduction pathways. Its tight control over cell proliferation and cell viability are manifold; overexpression or inappropriate activation of AKT has been seen in many types of cancer.

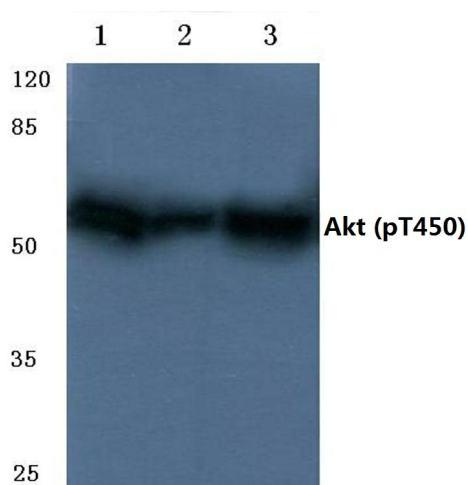

[View online »](#)

**Synonyms:**

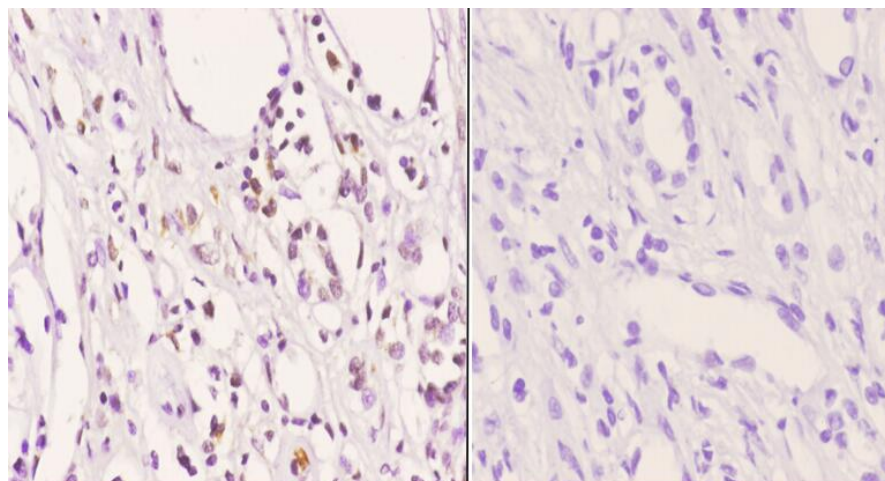
AKT1; AKT2; AKT3; PKB; PKB alpha; PKB beta; PKBG; PKB gamma; PKB $\alpha$ ; PKB $\beta$ ; PKB $\gamma$ ; Protein kinase Akt-2; Protein kinase Akt-3; Protein kinase B; Protein kinase B alpha; Protein kinase B beta; Protein kinase B gamma; Proto-oncogene c-Akt; RAC; RAC-alpha serine/threonine-protein kinase; RAC-beta serine/threonine-protein kinase; RAC-gamma serine/threonine-protein kinase; RAC-PK-alpha; RAC-PK-beta; RAC-PK-gamma; STK-2

**Note:**

For research use only, not for use in diagnostic procedure.

**Product images:**


Western blot (WB) analysis of AKT (phospho-T450) polyclonal antibody at 1:500 dilution  
Lane1:L02 whole cell lysate Lane2:L02 treated with EGF(0.1ng/ml,5min) whole cell lysate  
Lane3:L02 treated with EGF(0.1ng/ml,10min) whole cell lysate Lane4:L02 treated with EGF(0.1ng/ml,15min) whole cell lysate



Immunohistochemistry (IHC) analyzes of p-AKT (T450) pAb in paraffin-embedded human kidney carcinoma tissue at 1:50. showing cytoplasmic and nucleus staining. Negative control (the right) Using PBS instead of primary antibody, secondary antibody is Goat Anti-Rabbit IgG-biotin followed by avidin-peroxidase.