

Product datasheet for **TA392907S**

POLR2A Rabbit Polyclonal Antibody

Product data:

Product Type:	Primary Antibodies
Applications:	WB
Recommended Dilution:	WB: 1:500~1:1000 IHC: 1:50~1:200
Reactivity:	Human, Mouse, Rat
Host:	Rabbit
Isotype:	IgG
Clonality:	Polyclonal
Immunogen:	Synthetic phosphopeptide derived from human Rpb1 around the phosphorylation site of Serine 1619.
Specificity:	p-Rpb1 (S1619) polyclonal antibody detects endogenous levels of Rpb1 protein only when phosphorylated at Ser1619.
Formulation:	Rabbit IgG, 1mg/ml in PBS with 0.02% sodium azide, 50% glycerol, pH7.2
Concentration:	1mg/ml
Conjugation:	Unconjugated
Storage:	Store at 4°C short term. Aliquot and store at -20°C long term. Avoid freeze-thaw cycles.
Stability:	1 year
Predicted Protein Size:	~ 280 kDa
Gene Name:	polymerase (RNA) II subunit A
Database Link:	Entrez Gene 5430 Human P24928
Background:	RPB1 is a subunit of RNA polymerase II which catalyses transcription of RNA from DNA. RPB1 forms the polymerase active center together with the second largest subunit. Pol II is the central component of the basal RNA polymerase II transcription machinery. It is composed of mobile elements that move relative to each other. RPB1 is part of the core element with the central large cleft, the clamp element that moves to open and close the cleft and the jaws that are thought to grab the incoming DNA template.

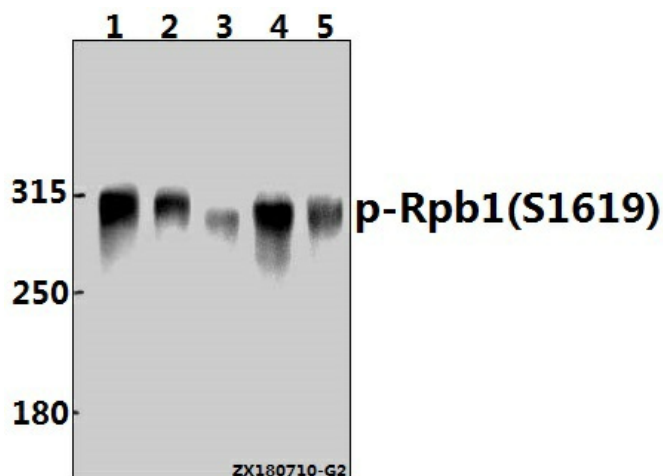


[View online »](#)

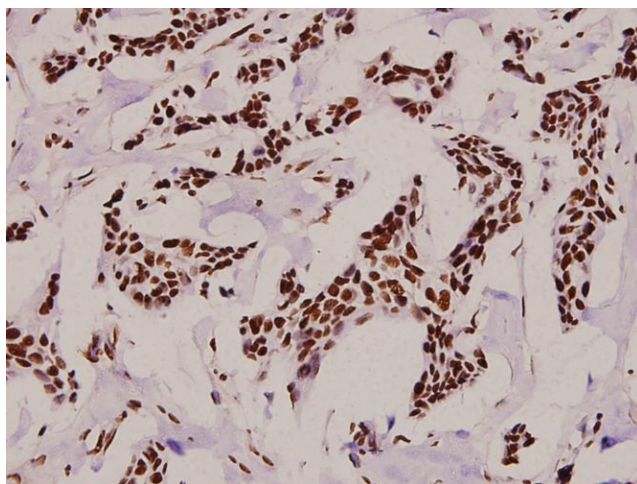
Synonyms: DNA-directed RNA polymerase III largest subunit; DNA-directed RNA polymerase II subunit A; DNA-directed RNA polymerase II subunit RPB1; POLR2; POLR2A; RNA-directed RNA polymerase II subunit RPB1; RNA polymerase II subunit B1

Note: For research use only, not for use in diagnostic procedure.

Product images:



Western blot (WB) analysis of p-Rpb1 (S1619) pAb at 1:2000 dilution. Lane 1: A549 whole cell lysate (40ug); Lane 2: HeLa whole cell lysate (40ug); Lane 3: A2780 whole cell lysate (40ug); Lane 4: PC12 whole cell lysate (40ug); Lane 5: 3T3-L1 whole cell lysate (40ug).



Immunohistochemistry (IHC) analysis of p-Rpb1 (S1619) pAb in paraffin-embedded human breast carcinoma tissue at 1:100.