

Product datasheet for **TA392906M**

PLCG 2 (PLCG2) Rabbit Polyclonal Antibody

Product data:

Product Type:	Primary Antibodies
Applications:	WB
Recommended Dilution:	WB: 1:500~1:1000 IHC: 1:50~1:200
Reactivity:	Human, Rat
Host:	Rabbit
Isotype:	IgG
Clonality:	Polyclonal
Immunogen:	Synthetic phosphopeptide derived from human PLC γ 2 around the phosphorylation site of Tyrosine 753.
Specificity:	p-PLC γ 2 (Y753) polyclonal antibody detects endogenous levels of PLC γ 2 protein when phosphorylated at Tyr753.
Formulation:	Rabbit IgG, 1mg/ml in PBS with 0.02% sodium azide, 50% glycerol, pH7.2
Concentration:	1mg/ml
Conjugation:	Unconjugated
Storage:	Store at 4°C short term. Aliquot and store at -20°C long term. Avoid freeze-thaw cycles.
Stability:	1 year
Predicted Protein Size:	~ 150 kDa
Gene Name:	phospholipase C gamma 2
Database Link:	Entrez Gene 5336 Human P16885

[View online »](#)

Background:

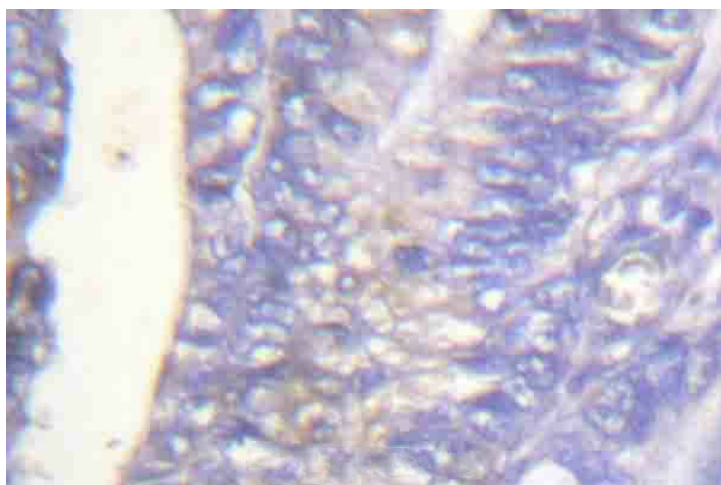
Phosphoinositide-specific phospholipase C (PLC) plays a crucial role in the initiation of receptor mediated signal transduction through the generation of the two second messengers, inositol 1,4,5-triphosphate and diacylglycerol from phosphatidylinositol 4,5-bisphosphate. There are many mammalian PLC isozymes, including PLC β 1, PLC β 2, PLC β 3, PLC β 4, PLC γ 1, PLC γ 2, PLC δ 1, PLC δ 2 and PLC ϵ . PLC δ exists as four different isoforms. PLC δ 1, a calcium signal amplifier, is activated by an atypical GTP-binding protein. In addition, PLC δ 1 is an effector for GTP-binding protein transglutaminase II-mediated oxytocin receptor and α 1B-adrenoreceptor signaling. Mouse PLC δ 1 is highly expressed in brain, heart, lung and testis. PLC δ is abnormally accumulated in autopsied brains with Alzheimer's disease (AD), suggesting that it may play a role in the pathology of AD. PLC δ 2 is markedly expressed in type II intestinal metaplasia and in the adenocarcinoma. When PLC δ 2 is expressed in type I intestinal metaplasia, the metaplasia is generally considered benign, yet evolves toward neoplastic transformation. Thus, PLC δ 2 expression may be a possible marker of gastric malignant transformation.

Synonyms:

1-phosphatidylinositol 4,5-bisphosphate phosphodiesterase gamma-2; Phosphoinositide phospholipase C-gamma-2; Phospholipase C-gamma-2; Phospholipase C-IV; PLC-gamma-2; PLC-IV; PLC- γ 2; PLCG2; PLC γ -2; PLC γ 2

Note:

For research use only, not for use in diagnostic procedure.

Product images:


Immunohistochemistry (IHC) analyzes of p-PLC γ 2 (Y753) pAb in paraffin-embedded human colon cancer tissue.