

Product datasheet for **TA392904S**

GRLF1 (ARHGAP35) Rabbit Polyclonal Antibody

Product data:

Product Type:	Primary Antibodies
Applications:	WB
Recommended Dilution:	WB: 1:500~1:1000 IHC: 1:50~1:200
Reactivity:	Human, Mouse, Rat
Host:	Rabbit
Isotype:	IgG
Clonality:	Polyclonal
Immunogen:	Synthetic phosphopeptide derived from human GRF-1 around the phosphorylation site of Tyrosine 1105.
Specificity:	p-GRF-1 (Y1105) polyclonal antibody detects endogenous levels of GRF-1 protein only when phosphorylated at Tyr1105.
Formulation:	Rabbit IgG, 1mg/ml in PBS with 0.02% sodium azide, 50% glycerol, pH7.2
Concentration:	1mg/ml
Conjugation:	Unconjugated
Storage:	Store at 4°C short term. Aliquot and store at -20°C long term. Avoid freeze-thaw cycles.
Stability:	1 year
Predicted Protein Size:	~ 172 kDa
Gene Name:	Rho GTPase activating protein 35
Database Link:	Entrez Gene 2909 Human Q9NRY4



[View online »](#)

Background:

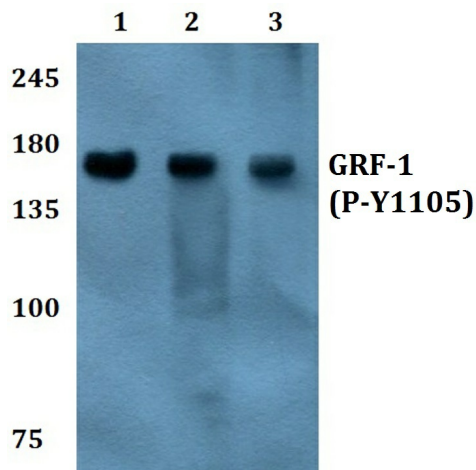
GRF-1 (glucocorticoid receptor DNA-binding factor 1), also known as p190RhoGAP or simply p190, is a transcriptional regulator which binds to the promoter region of the glucocorticoid receptor gene and represses its expression. By repressing GR expression, GRF-1 acts to down-regulate Rho signaling, thereby mediating both actin cytoskeletal rearrangements and cell cycle events. Through its GAP domain, GRF-1 is thought to affect cytokinesis by regulating Rho activity; a regulation that is controlled by the ubiquitination of the GTP binding region and subsequent degradation of GRF-1. Additionally, GRF-1 plays an important role in oligodendrocyte differentiation, a process that is absent in malignant glioma tumors, implicating GRF-1 as a possible tumor suppressor. GRF-1 expression is regulated by glucocorticoids and the expressed protein exists as two isoforms produced by alternative splicing events.

Synonyms:

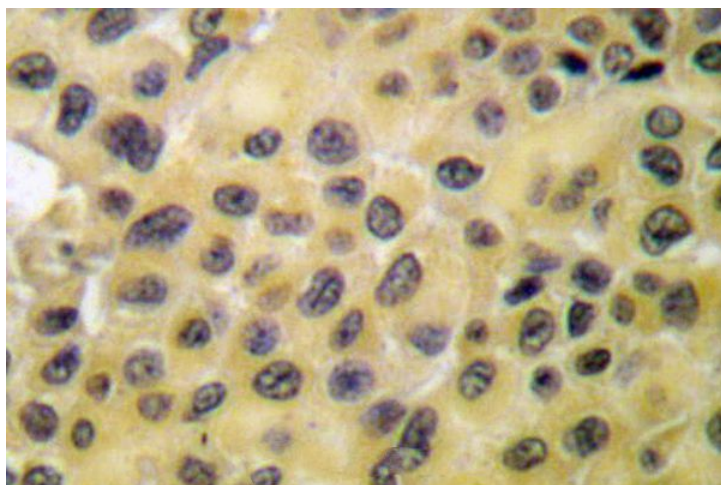
ARHGAP35; Glucocorticoid receptor DNA-binding factor 1; Glucocorticoid receptor repression factor 1; GRF-1; GRF1; GRLF1; KIAA1722; p190-A; Rho GAP p190A; Rho GTPase-activating protein 35

Note:

For research use only, not for use in diagnostic procedure.

Product images:


Western blot (WB) analysis of p-GRF-1 (Y1105) pAb at 1:500 dilution Lane1:The Heart tissue lysate of Rat(40ug) Lane2:K562 whole cell lysate(40ug) Lane3:Jurkat whole cell lysate(40ug) Lane4:The Blood tissue lysate of Mouse(40ug) Lane5:H1792 whole cell lysate(40ug) Lane6:HEK293T whole cell lysate(40ug) Lane7:SP2/0 whole cell lysate(40ug)



Immunohistochemistry (IHC) analyzes of p-GRF-1 (Y1105) pAb in paraffin-embedded human brain tissue.