

Product datasheet for **TA392902M**

DAXX Rabbit Polyclonal Antibody

Product data:

Product Type:	Primary Antibodies
Applications:	WB
Recommended Dilution:	WB: 1:500~1:1000
Reactivity:	Human
Host:	Rabbit
Isotype:	IgG
Clonality:	Polyclonal
Immunogen:	Synthetic phosphopeptide derived from human Daxx around the phosphorylation site of Serine 668.
Specificity:	Daxx (phospho-S668) polyclonal antibody detects endogenous levels of Daxx protein only when phosphorylated at Ser668.
Formulation:	Rabbit IgG, 1mg/ml in PBS with 0.02% sodium azide, 50% glycerol, pH7.2
Concentration:	1mg/ml
Conjugation:	Unconjugated
Storage:	Store at 4°C short term. Aliquot and store at -20°C long term. Avoid freeze-thaw cycles.
Stability:	1 year
Predicted Protein Size:	~ 110 kDa
Gene Name:	death-domain associated protein
Database Link:	Entrez Gene 1616 Human Q9UER7



[View online »](#)

Background:

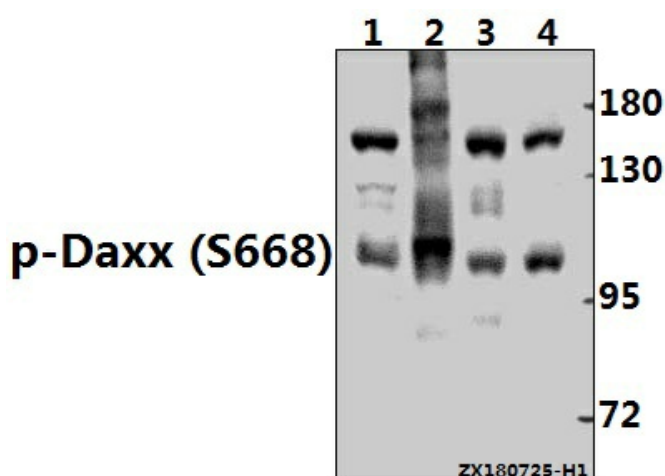
Apoptosis, or programmed cell death, occurs during normal cellular differentiation and development of multicellular organisms. Apoptosis is induced by certain cytokines including TNF and Fas ligand of the TNF family through their death domain containing receptors, TNFR1 and Fas. Cell death signals are transduced by death domain (DD) containing adapter molecules and members of the ICE/CED3 protease family. A novel DD containing molecule was recently cloned from mouse, human and monkey and designated Daxx. Daxx is a death domain containing important intermediate in the Fas mediated apoptosis. Daxx binds specifically to the Fas death domain and enhances Fas induced apoptosis and activates the Jun N terminal kinase (JNK) pathway. It is widely expressed in fetal and adult human and mouse tissue, indicating its important function in Fas signaling pathways.

Synonyms:

BING2; DAP6; DAXX; Daxx; Death domain-associated protein 6; EAP1; ETS1-associated protein 1; Fas death domain-associated protein; hDaxx

Note:

For research use only, not for use in diagnostic procedure.

Product images:


Western blot (WB) analysis of p-Daxx (S668) pAb at 1:500 dilution Lane1:A2780 whole cell lysate(40ug) Lane2:Hela whole cell lysate(40ug) Lane3:MCF-7 whole cell lysate(40ug) Lane4:K562 whole cell lysate(20ug)