

## Product datasheet for **TA392900M**

### CEBP Alpha (CEBPA) Rabbit Polyclonal Antibody

#### Product data:

Product Type:	Primary Antibodies
Applications:	WB
Recommended Dilution:	WB: 1:500~1:1000 IHC: 1:50~1:200
Reactivity:	Human, Mouse, Rat
Host:	Rabbit
Isotype:	IgG
Clonality:	Polyclonal
Immunogen:	Synthetic phosphopeptide derived from human C/EBP $\alpha$ around the phosphorylation site of Serine 21.
Specificity:	p-C/EBP $\alpha$ (S21) polyclonal antibody detects endogenous levels of C/EBP $\alpha$ protein only when phosphorylated at Ser21.
Formulation:	Rabbit IgG, 1mg/ml in PBS with 0.02% sodium azide, 50% glycerol, pH7.2
Concentration:	1mg/ml
Conjugation:	Unconjugated
Storage:	Store at 4°C short term. Aliquot and store at -20°C long term. Avoid freeze-thaw cycles.
Stability:	1 year
Predicted Protein Size:	~ 30,45 kDa
Gene Name:	CCAAT/enhancer binding protein alpha
Database Link:	<a href="#">Entrez Gene 1050 Human P49715</a>

[View online »](#)

**Background:**

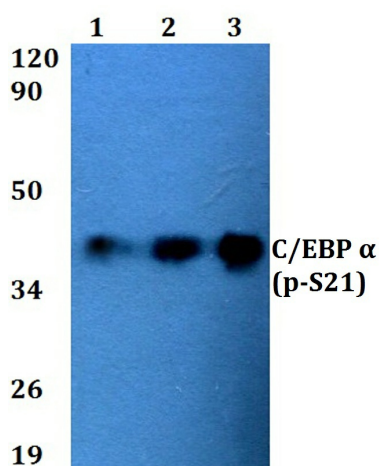
C/EBP  $\alpha$  regulates gene expression in a variety of tissues including liver, adipose, lung and intestine. C/EBP  $\alpha$  is a basic region/leucine zipper transcription factor selectively expressed during the differentiation of liver, adipose tissue, blood cells and the endocrine pancreas. C/EBP  $\alpha$  uses a bipartite structural motif to bind DNA and appears to function exclusively in terminally differentiated, growtharrested cells. In the liver, C/EBP  $\alpha$  is a transactivator of several genes, which are regulated by growth hormone. Growth hormone enhances not only the levels of C/EBP  $\alpha$  mRNA and protein, but also the DNA-binding activity of C/EBP  $\alpha$ . C/EBP  $\alpha$  functions as an important transcription factor that regulates different genes, including Prolactin gene expression.

**Synonyms:**

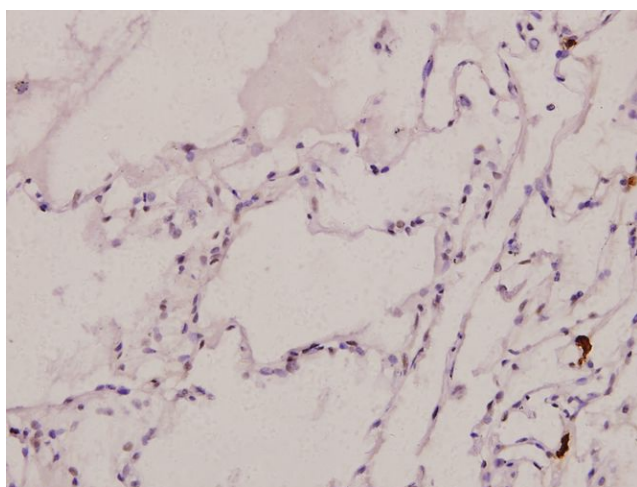
C/EBP alpha; C/EBP  $\alpha$ ; C/EBP $\alpha$ ; CCAAT/enhancer-binding protein alpha; CEBPA

**Note:**

For research use only, not for use in diagnostic procedure.

**Product images:**


Western blot (WB) analysis of C/EBP  $\alpha$  (phospho-S21) polyclonal antibody at 1:500 dilution  
Lane1:L02 whole cell lysate Lane2:L02 treated with PBS(1 $\times$ PBS,PH7.4) for 1 hour then treated with DMEM(10%FBS) for 5 minutes whole cell lysate Lane3:L02 treated with PBS(1 $\times$ PBS,PH7.4) for 1 hour then treated with DMEM(10%FBS) for 10 minutes whole cell lysate Lane4:L02 treated with PBS(1 $\times$ PBS,PH7.4) for 1 hour then treated with DMEM(10%FBS) for 15 minutes whole cell lysate



Immunohistochemistry (IHC) analyzes of p-C/EBP  $\alpha$  (S21) pAb in paraffin-embedded human lung carcinoma tissue at 1:100.