

Product datasheet for **TA392898M**

RUNX1 Rabbit Polyclonal Antibody

Product data:

Product Type:	Primary Antibodies
Applications:	WB
Recommended Dilution:	WB: 1:500~1:1000
Reactivity:	Human, Mouse, Rat
Host:	Rabbit
Isotype:	IgG
Clonality:	Polyclonal
Immunogen:	Synthetic phosphopeptide derived from human RUNX1 around the phosphorylation site of Serine 249.
Specificity:	RUNX1 (phospho-S249) polyclonal antibody detects endogenous levels of RUNX1 protein only when phosphorylated at Ser249.
Formulation:	Rabbit IgG, 1mg/ml in PBS with 0.02% sodium azide, 50% glycerol, pH7.2
Concentration:	1mg/ml
Conjugation:	Unconjugated
Storage:	Store at 4°C short term. Aliquot and store at -20°C long term. Avoid freeze-thaw cycles.
Stability:	1 year
Predicted Protein Size:	~ 55 kDa
Gene Name:	runt related transcription factor 1
Database Link:	Entrez Gene 861 Human Q01196
Background:	<p>AML1 (also known as Runx1, CBFA2, and PEBP2αB) is a member of the core binding factor (CBF) family of transcription factors. It is required for normal development of all hematopoietic lineages. AML1 forms a heterodimeric DNA binding complex with its partner protein CBFβ and regulates the expression of cellular genes by binding to promoter and enhancer elements. AML1 is commonly translocated in hematopoietic cancers: chromosomal translocations include t(8;21) AML1-ETO, t(12;21) TEL-AML, and t(8;21) AML-M2. Phosphorylation of AML1 on several potential serine and threonine sites, including Ser249, is thought to occur in an Erk-dependent manner.</p>

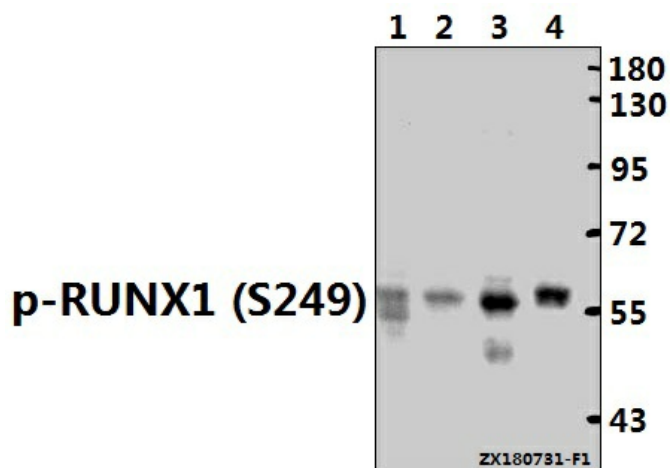

[View online »](#)

Synonyms:

Acute myeloid leukemia 1 protein; AML1; CBF-alpha-2; CBFA2; Core-binding factor subunit alpha-2; Oncogene AML-1; PEA2-alpha B; PEBP2-alpha B; Polyomavirus enhancer-binding protein 2 alpha B subunit; Runt-related transcription factor 1; RUNX1; SL3-3 enhancer factor 1 alpha B subunit; SL3/AKV core-binding factor alpha B subunit

Note:

For research use only, not for use in diagnostic procedure.

Product images:


Western blot (WB) analysis of p-RUNX1 (S249) pAb at 1:500 dilution Lane1:3T3-L1 whole cell lysate(40ug) Lane2:The Thymus tissue lysate of Rat(40ug) Lane3:K562 whole cell lysate(40ug) Lane4:Myla2059 whole cell lysate(40ug)