

## Product datasheet for **TA392897S**

### WNK1 Rabbit Polyclonal Antibody

#### Product data:

Product Type:	Primary Antibodies
Applications:	WB
Recommended Dilution:	WB: 1:500~1:1000 IHC: 1:50~1:200
Reactivity:	Human, Mouse, Rat
Host:	Rabbit
Isotype:	IgG
Clonality:	Polyclonal
Immunogen:	Synthetic phosphopeptide derived from human WNK1 around the phosphorylation site of Threonine 60.
Specificity:	p-WNK1 (T60) polyclonal antibody detects endogenous levels of WNK1 protein only when phosphorylated at Thr60.
Formulation:	Rabbit IgG, 1mg/ml in PBS with 0.02% sodium azide, 50% glycerol, pH7.2
Concentration:	1mg/ml
Conjugation:	Unconjugated
Storage:	Store at 4°C short term. Aliquot and store at -20°C long term. Avoid freeze-thaw cycles.
Stability:	1 year
Predicted Protein Size:	~ 251 kDa
Gene Name:	WNK lysine deficient protein kinase 1
Database Link:	<a href="#">Entrez Gene 65125 Human Q9H4A3</a>



[View online »](#)

**Background:**

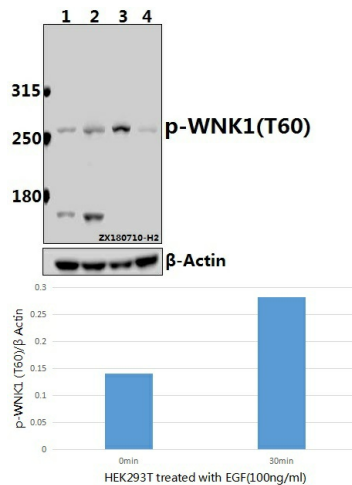
WNK1 (WNK lysine deficient protein kinase 1), also known as KDP (kinase deficient protein), PSK, erythrocyte 65 kDa protein (p65), HSN2, HSN2 or PRKWINK1, is a 2,382 amino acid cytoplasmic protein that participates in cell signaling, proliferation and survival, and regulates electrolyte homeostasis. WNK1 belongs to the Ser/Thr protein kinase family of the protein kinase superfamily, and contains one protein kinase domain. Existing as five alternatively spliced isoforms, WNK1 is widely expressed but is found at highest levels in skeletal muscle, heart, testis and kidney. The gene that encodes WNK1 maps to human chromosome 12p13.33, and when defective, is the cause of an autosomal dominant disease known as pseudohypoaldosteronism type II (PHAII), as well as a hereditary sensory and autonomic neuropathy designated hereditary sensory and autonomic neuropathy type 2A (HSAN2A).

**Synonyms:**

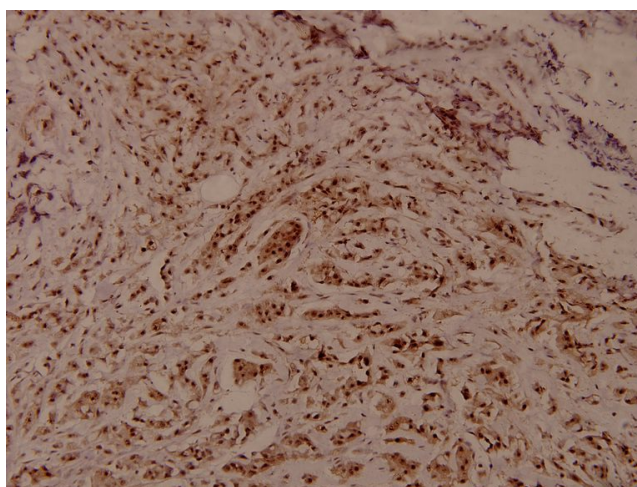
Erythrocyte 65 kDa protein; HSN2; hWNK1; KDP; KIAA0344; Kinase deficient protein; PRKWINK1; Protein kinase lysine-deficient 1; Protein kinase with no lysine 1; Serine/threonine-protein kinase WNK1; WNK

**Note:**

For research use only, not for use in diagnostic procedure.

**Product images:**


Western blot (WB) analysis of p-WNK1 (T60) pAb at 1:500 dilution Lane1:HEK293T whole cell lysate(40ug) Lane2:HEK293T treated with EGF(100ng/ml,30 minutes) whole cell lysate(40ug) Lane3:PC12 whole cell lysate(40ug) Lane4:AML-12 whole cell lysate(40ug)



Immunohistochemistry (IHC) analyzes of p-WNK1 (T60) pAb in paraffin-embedded human breast carcinoma tissue at 1:100.