

## Product datasheet for **TA392895**

### **SHP2 (PTPN11) Rabbit Polyclonal Antibody**

#### **Product data:**

<b>Product Type:</b>	Primary Antibodies
<b>Applications:</b>	WB
<b>Recommended Dilution:</b>	WB: 1:500~1:1000 IHC: 1:50~1:200
<b>Reactivity:</b>	Human, Mouse, Rat
<b>Host:</b>	Rabbit
<b>Isotype:</b>	IgG
<b>Clonality:</b>	Polyclonal
<b>Immunogen:</b>	Synthetic phosphopeptide derived from human SHP-2 around the phosphorylation site of Tyrosine 542.
<b>Specificity:</b>	p-SHP-2 (Y542) polyclonal antibody detects endogenous levels of SHP-2 protein only when phosphorylated at Tyr542.
<b>Formulation:</b>	Rabbit IgG, 1mg/ml in PBS with 0.02% sodium azide, 50% glycerol, pH7.2
<b>Concentration:</b>	1mg/ml
<b>Conjugation:</b>	Unconjugated
<b>Storage:</b>	Store at 4°C short term. Aliquot and store at -20°C long term. Avoid freeze-thaw cycles.
<b>Stability:</b>	1 year
<b>Predicted Protein Size:</b>	~ 70 kDa
<b>Gene Name:</b>	protein tyrosine phosphatase, non-receptor type 11
<b>Database Link:</b>	<a href="#">Entrez Gene 5781 Human Q06124</a>



[View online »](#)

**Background:**

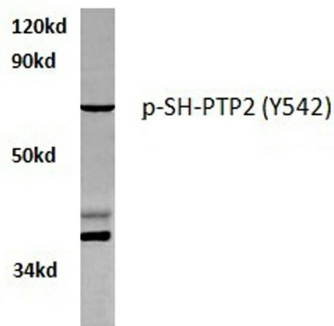
Several groups have independently identified a non-transmembrane PTP, designated SH-PTP1 (also known as PTP1C, HCP and SHP), which is primarily expressed in hematopoietic cells and characterized by the presence of two SH2 domains N-terminal to the PTP domain. SH2 domains generally mediate the association of regulatory molecules with specific phosphotyrosine-containing sites on autophosphorylated receptors, thereby controlling the initial interaction of receptors with these substrates. A second and much more widely expressed PTP with SH2 domains, SH-PTP2 (also designated PTP1D and Syp), has been identified. Strong sequence similarity between SH-PTP2 and the Drosophila gene corkscrew (CSW) and their similar patterns of expression suggest that SH-PTP2 is the human corkscrew homolog.

**Synonyms:**

Protein-tyrosine phosphatase 1D; Protein-tyrosine phosphatase 2C; PTP-1D; PTP-2C; PTP2C; PTPN11; SH-PTP2; SH-PTP3; SHP-2; Shp2; SHPTP2; Tyrosine-protein phosphatase non-receptor type 11

**Note:**

For research use only, not for use in diagnostic procedure.

**Product images:**

A549 whole cell lysate  
p-SH-PTP2 (Y542) pAb at 1:500 dilution

Western blot (WB) analysis of p-SHP-2 (Y542) polyclonal antibody at 1:500 dilution Lane1:A549 whole cell lysate Lane2:Raw264.7 whole cell lysate Lane3:H9C2 whole cell lysate



Immunohistochemistry (IHC) analyzes of p-SHP-2 (Y542) pAb in paraffin-embedded human breast cancer tissue.