

Product datasheet for **TA392894M**

Phospholipase C gamma 1 (PLCG1) Rabbit Polyclonal Antibody

Product data:

Product Type:	Primary Antibodies
Applications:	WB
Recommended Dilution:	WB: 1:500~1:1000
Reactivity:	Human, Mouse, Rat
Host:	Rabbit
Isotype:	IgG
Clonality:	Polyclonal
Immunogen:	Synthetic phosphopeptide derived from human PLC γ 1 around the phosphorylation site of Tyrosine 783.
Specificity:	p-PLC γ 1 (Y783) polyclonal antibody detects endogenous levels of PLC γ 1 protein only when phosphorylated at Tyr783
Formulation:	Rabbit IgG, 1mg/ml in PBS with 0.02% sodium azide, 50% glycerol, pH7.2
Concentration:	1mg/ml
Conjugation:	Unconjugated
Storage:	Store at 4°C short term. Aliquot and store at -20°C long term. Avoid freeze-thaw cycles.
Stability:	1 year
Predicted Protein Size:	~ 148 kDa
Gene Name:	phospholipase C gamma 1
Database Link:	Entrez Gene 5335 Human P19174



[View online »](#)

Background:

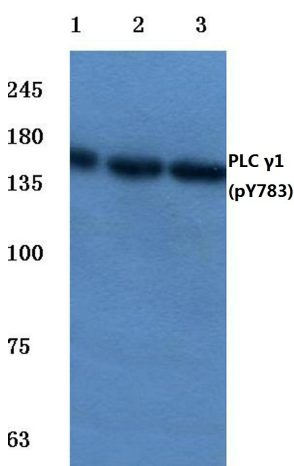
Phosphoinositide-specific phospholipase C (PLC) plays a crucial role in the initiation of receptor mediated signal transduction through the generation of the two second messengers, inositol 1,4,5-triphosphate and diacylglycerol from phosphatidylinositol 4,5-bisphosphate. There are many mammalian PLC isozymes, including PLC β 1, PLC β 2, PLC β 3, PLC β 4, PLC γ 1, PLC γ 2, PLC δ 1, PLC δ 2 and PLC ϵ . PLC γ 1 is widely distributed in bronchiolar epithelium, type I and II pneumocytes and fibroblasts of the interstitial tissue. Actinregulatory protein Villin is tyrosine phosphorylated and associates with PLC γ 1 in the brush border of intestinal epithelial cells. Villin regulates PLC γ 1 activity by modifying its own ability to bind phosphatidylinositol 4,5-bisphosphate. PLC γ 1 binds α 1 β 1 Integrin and modulates α 1 β 1 Integrin-specific adhesion. PLC γ 1 and Ca²⁺ play a direct role in VEGF-regulated endothelial growth, however this signaling pathway is not linked to FGF-mediated effects in primary endothelial cells.

Synonyms:

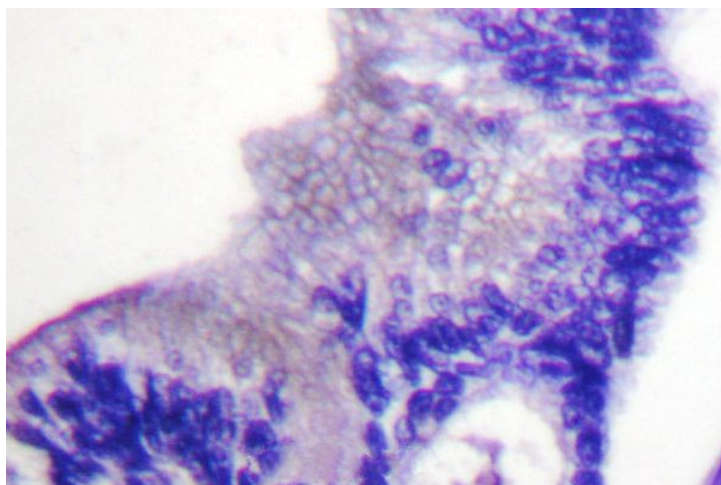
1-phosphatidylinositol 4,5-bisphosphate phosphodiesterase gamma-1; Phosphoinositide phospholipase C-gamma-1; Phospholipase C-gamma-1; Phospholipase C-II; Phospholipase C2; PLC-148; PLC-gamma-1; PLC-II; PLC1; PLC2I; PLC148; PLCG1; PLC γ 1

Note:

For research use only, not for use in diagnostic procedure.

Product images:


Western blot (WB) analysis of p-PLC γ 1 (Y783) pAb at 1:500 dilution Lane1:HEK293T whole cell lysate(40ug) Lane2:HEK293T treated with UV for 5 minutes then repair for 4 hours whole cell lysate(40ug) Lane3:HEK293T treated with UV for 5 minutes then repair for 6 hours whole cell lysate(40ug) Lane4:HEK293T treated with UV for 5 minutes then repair for 16 hours whole cell lysate(40ug) Lane5:HEK293T treated with UV for 5 minutes then repair for 24 hours whole cell lysate(40ug) Lane6:C6 whole cell lysate(40ug) Lane7:The Kidney tissue lysate of Mouse(40ug)



Immunohistochemistry (IHC) analyzes of p-PLCG1 (Y783) pAb in paraffin-embedded human breast carcinoma tissue.