

## Product datasheet for **TA392893S**

### PDPK1 Rabbit Polyclonal Antibody

#### Product data:

Product Type:	Primary Antibodies
Applications:	WB
Recommended Dilution:	WB: 1:500~1:1000 IHC: 1:50~1:200
Reactivity:	Human, Mouse, Rat
Host:	Rabbit
Isotype:	IgG
Clonality:	Polyclonal
Immunogen:	Synthetic phosphopeptide derived from human PDPK1 around the phosphorylation site of Serine 241.
Specificity:	p-PDPK1 (S241) polyclonal antibody detects endogenous levels of PDPK1 protein when phosphorylated at Ser241.
Formulation:	Rabbit IgG, 1mg/ml in PBS with 0.02% sodium azide, 50% glycerol, pH7.2
Concentration:	1mg/ml
Conjugation:	Unconjugated
Storage:	Store at 4°C short term. Aliquot and store at -20°C long term. Avoid freeze-thaw cycles.
Stability:	1 year
Predicted Protein Size:	~ 63 kDa
Gene Name:	3-phosphoinositide dependent protein kinase 1
Database Link:	<a href="#">Entrez Gene 5170 Human Q15530</a>
Background:	PDK1 (3 Phosphoinositide Dependent Protein Kinase 1) phosphorylates AGC kinases. PDK1 activates conventional PKC and PKC zeta through phosphorylation of critical threonine residues in the activation loop. PDK1 also phosphorylates Protein Kinase B (PKB) at threonine 308 in the presence of phosphatidylinositol-3,4,5-trisphosphate. Active Akt inactivates Glycogen Synthase Kinase 3 (GSK3), eventually leading to the dephosphorylation and activation of glycogen synthase, and the stimulation of glycogen synthesis. Because of the role that PDK plays in insulin-induced glycogen synthesis and PKC activation, it is a potentially important target for metabolic drug research.

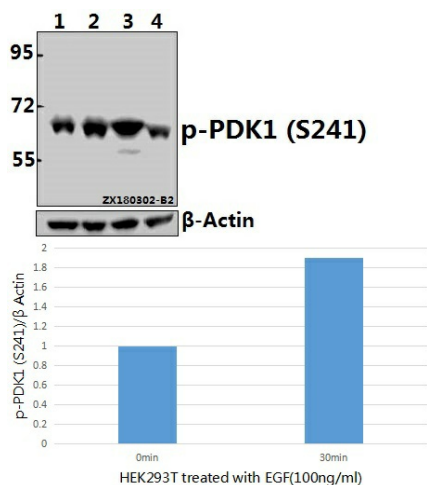


[View online »](#)

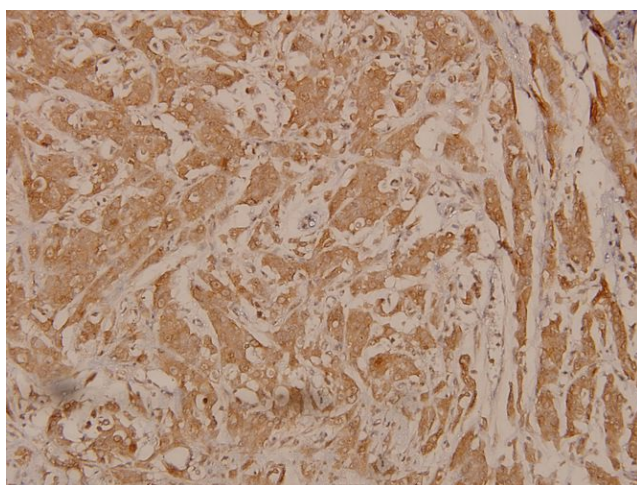
**Synonyms:** 3-phosphoinositide-dependent protein kinase 1; hPDK1; PDK1; PDPK1

**Note:** For research use only, not for use in diagnostic procedure.

**Product images:**



Western blot (WB) analysis of p-PDK1 (S241) pAb at 1:1000 dilution Lane1:HEK293T whole cell lysate(40ug) Lane2:HEK293T treated with EGF(100ng/ml,30 minutes) whole cell lysate(40ug) Lane3:C6 whole cell lysate(40ug) Lane4:CT26 whole cell lysate(40ug)



Immunohistochemistry (IHC) analyzes of p-PDPK1 (S241) pAb in paraffin-embedded human breast carcinoma tissue at 1:100.