

Product datasheet for **TA392892S**

Cytokeratin 18 (KRT18) Rabbit Polyclonal Antibody

Product data:

Product Type:	Primary Antibodies
Applications:	WB
Recommended Dilution:	WB: 1:500~1:1000 IHC: 1:50~1:200
Reactivity:	Human, Mouse, Rat
Host:	Rabbit
Isotype:	IgG
Clonality:	Polyclonal
Immunogen:	Synthetic phosphopeptide derived from human Cytokeratin 18 around the phosphorylation site of Serine 33.
Specificity:	p-Cytokeratin 18 (S33) polyclonal antibody detects endogenous levels of Cytokeratin 18 protein only when phosphorylated at Ser33.
Formulation:	Rabbit IgG, 1mg/ml in PBS with 0.02% sodium azide, 50% glycerol, pH7.2
Concentration:	1mg/ml
Conjugation:	Unconjugated
Storage:	Store at 4°C short term. Aliquot and store at -20°C long term. Avoid freeze-thaw cycles.
Stability:	1 year
Predicted Protein Size:	~ 46 kDa
Gene Name:	keratin 18
Database Link:	Entrez Gene 3875 Human P05783



[View online »](#)

Background:

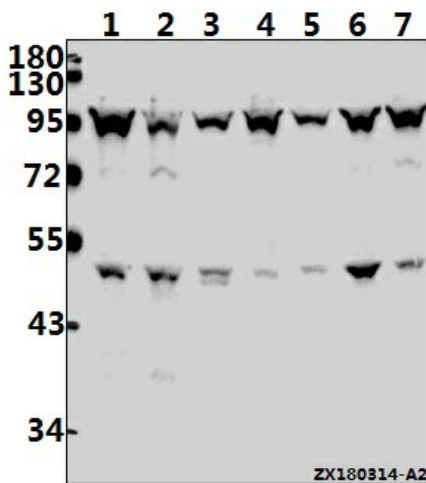
Cytokeratin 18 encodes the type I intermediate filament chain keratin 18. Keratin 18, together with its filament partner keratin 8, are perhaps the most commonly found members of the intermediate filament gene family. They are expressed in single layer epithelial tissues of the body. Mutations in this gene have been linked to cryptogenic cirrhosis. Two transcript variants encoding the same protein have been found for this gene. Involved in the uptake of thrombin-antithrombin complexes by hepatic cells. By similarity. When phosphorylated, plays a role in filament reorganization. Involved in the delivery of mutated CFTR to the plasma membrane. Together with KRT8, is involved in interleukin-6 (IL-6)-mediated barrier protection.

Synonyms:

Cell proliferation-inducing gene 46 protein; CK-18; CK 18; CK18; CYK18; Cytokeratin-18; Keratin, type I cytoskeletal 18; Keratin-18; Keratin 18; Keratin18; KRT 18; KRT18; PIG46; Short name=CK-18; Short name=K18

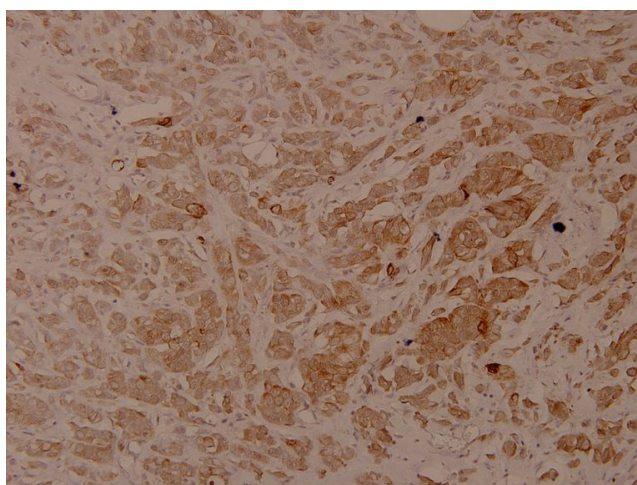
Note:

For research use only, not for use in diagnostic procedure.

Product images:


p-Cytokeratin 18 (S33)

Western blot (WB) analysis of p-Cytokeratin 18 (S33) pAb at 1:500 dilution
 Lane1:HCT116 whole cell lysate(40ug) Lane2:L02 whole cell lysate(40ug) Lane3:MCF-7 whole cell lysate(40ug) Lane4:CT26 whole cell lysate(40ug) Lane5:PMVEC whole cell lysate(40ug) Lane6:A549 whole cell lysate(40ug) Lane7:SGC7901 whole cell lysate(40ug)



Immunohistochemistry (IHC) analyzes of p-Cytokeratin 18 (S33) pAb in paraffin-embedded human breast carcinoma tissue at 1:100.