

## Product datasheet for **TA392890M**

### Filamin A (FLNA) Rabbit Polyclonal Antibody

#### Product data:

Product Type:	Primary Antibodies
Applications:	WB
Recommended Dilution:	WB: 1:500~1:1000 IHC: 1:50~1:200
Reactivity:	Human, Mouse, Rat
Host:	Rabbit
Isotype:	IgG
Clonality:	Polyclonal
Immunogen:	Synthetic phosphopeptide derived from human Filamin 1 around the phosphorylation site of Serine 2152.
Specificity:	p-Filamin 1 (S2152) polyclonal antibody detects endogenous levels of Filamin 1 protein when phosphorylated at Ser2152.
Formulation:	Rabbit IgG, 1mg/ml in PBS with 0.02% sodium azide, 50% glycerol, pH7.2
Concentration:	1mg/ml
Conjugation:	Unconjugated
Storage:	Store at 4°C short term. Aliquot and store at -20°C long term. Avoid freeze-thaw cycles.
Stability:	1 year
Predicted Protein Size:	~ 280 kDa
Gene Name:	filamin A
Database Link:	<a href="#">Entrez Gene 2316 Human P21333</a>



[View online »](#)

**Background:**

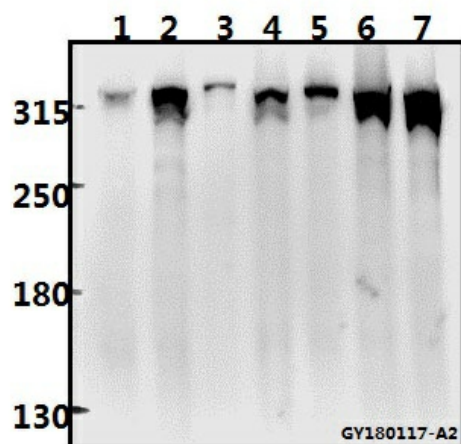
Caldesmon, Filamin 1, nebulin and villin are differentially expressed and regulated Actin binding proteins. Both muscular (CDh) and non-muscular (CDI) forms of caldesmon have been identified and each has been shown to bind to Actin as well as to calmodulin and Myosin. CDh is expressed predominantly on thin filaments in smooth muscle, whereas CDI is widely expressed in nonmuscle tissues and cells. Filamin 1, which is ubiquitously expressed and exists as a homodimer, functions to crosslink Actin to filaments. Nebulin is a large filamentous protein specific to muscle tissue that may function as a ruler for filament length. Several isoforms of nebulin, ranging from 700 to 900 kDa, are produced by alternative exon usage. Villin is Ca<sup>2+</sup>-regulated and is the major structural component of the brush border of absorptive cells.

**Synonyms:**

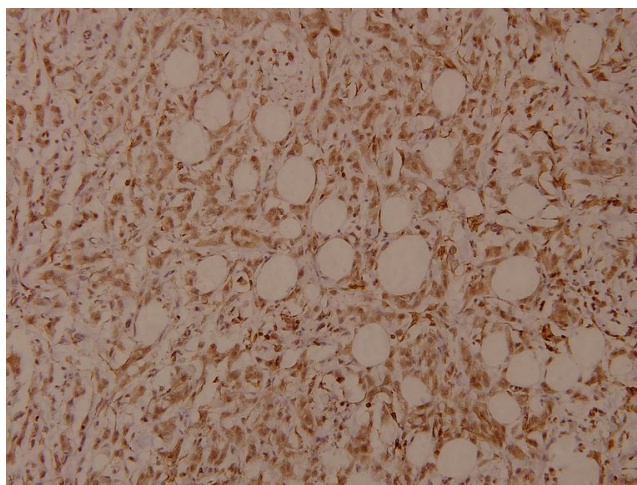
ABP-280; Actin-binding protein 280; Alpha-filamin; Endothelial actin-binding protein; Filamin-1; Filamin-A; Filamin1; Filamin A; FilaminA; FLN; FLN-A; FLN1; FLNA; Non-muscle filamin

**Note:**

For research use only, not for use in diagnostic procedure.

**Product images:**

**p-Filamin 1 (S2152)**

Western blot (WB) analysis of Filamin 1 (phospho-S2152) polyclonal antibody at 1:500 dilution  
 Lane1:Hela whole cell lysate(40ug) Lane2:A549 whole cell lysate(20ug) Lane3:The Lung tissue lysate of Rat(20ug) Lane4:AML-12 whole cell lysate(40ug) Lane5:CT26 whole cell lysate(40ug) Lane6:SKOVCA3 whole cell lysate(40ug) Lane7:Panc1 whole cell lysate(40ug)



Immunohistochemistry (IHC) analyzes of p-Filamin 1 (S2152) pAb in paraffin-embedded human breast carcinoma tissue at 1:100.