

## Product datasheet for **TA392889S**

### EEF2K Rabbit Polyclonal Antibody

#### Product data:

Product Type:	Primary Antibodies
Applications:	WB
Recommended Dilution:	WB: 1:500~1:1000 IHC: 1:50~1:200 IP: 1:10~1:100
Reactivity:	Human
Host:	Rabbit
Isotype:	IgG
Clonality:	Polyclonal
Immunogen:	Synthetic phosphopeptide derived from human eEF2K around the phosphorylation site of Serine 366.
Specificity:	p-eEF2K (S366) polyclonal antibody detects endogenous levels of eEF2K protein when phosphorylated at Ser366.
Formulation:	Rabbit IgG, 1mg/ml in PBS with 0.02% sodium azide, 50% glycerol, pH7.2
Concentration:	1mg/ml
Conjugation:	Unconjugated
Storage:	Store at 4°C short term. Aliquot and store at -20°C long term. Avoid freeze-thaw cycles.
Stability:	1 year
Predicted Protein Size:	~ 105 kDa
Gene Name:	eukaryotic elongation factor 2 kinase
Database Link:	<a href="#">Entrez Gene 29904 Human</a> <a href="#">O00418</a>
Background:	eEF2K is 105 kDa protein that is detected in skeletal muscle extracts and is phosphorylated rapidly by SAPK4, but poorly by p38, p38 $\gamma$ , JNK or ERK 2. SAPK4 phosphorylates eEF2K at Ser 359 and Ser 396 in vitro, causing its inactivation. The phosphorylation of eEF2K at Ser 359 is also induced by insulin-like growth factor-1. Ser 359 is in close proximity to Ser 366 and the Ser 366 residue also becomes phosphorylated in response to growth factors. eEF2K is phosphorylated by p70 S6 kinase at Ser 366 and this results in the inactivation of eEF2K, especially at low (micromolar) calcium concentrations.



[View online »](#)

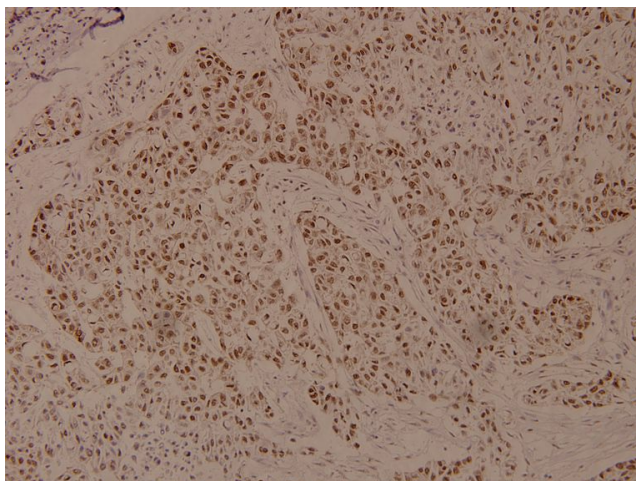
**Synonyms:** Calcium/calmodulin-dependent eukaryotic elongation factor 2 kinase; eEF-2 kinase; eEF-2K; EEF2K; Elongation factor 2 kinase

**Note:** For research use only, not for use in diagnostic procedure.

**Product images:**



Western blot (WB) analysis of p-eEF2K (S366) pAb at 1:1000 dilution Lane1:MCF-7 whole cell lysate(40ug) Lane2:Hela whole cell lysate(40ug) Lane3:A375 whole cell lysate(40ug)



Immunohistochemistry (IHC) analyzes of p-eEF2K (S366) pAb in paraffin-embedded human breast carcinoma tissue at 1:100.