

## Product datasheet for **TA392885M**

### CRKL Rabbit Polyclonal Antibody

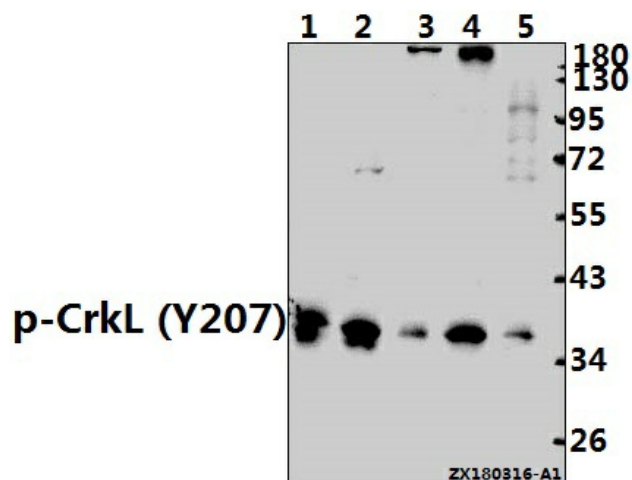
#### Product data:

Product Type:	Primary Antibodies
Applications:	WB
Recommended Dilution:	WB: 1:500~1:1000 IHC: 1:50~1:200
Reactivity:	Human, Mouse, Rat
Host:	Rabbit
Isotype:	IgG
Clonality:	Polyclonal
Immunogen:	Synthetic phosphopeptide derived from human CrkL around the phosphorylation site of Tyrosine 207.
Specificity:	p-Crk-L (Y207) polyclonal antibody detects endogenous levels of Crk-L protein only when phosphorylated at Tyr207.
Formulation:	Rabbit IgG, 1mg/ml in PBS with 0.02% sodium azide, 50% glycerol, pH7.2
Concentration:	1mg/ml
Conjugation:	Unconjugated
Storage:	Store at 4°C short term. Aliquot and store at -20°C long term. Avoid freeze-thaw cycles.
Stability:	1 year
Predicted Protein Size:	~ 39 kDa
Gene Name:	v-crk avian sarcoma virus CT10 oncogene homolog-like
Database Link:	<a href="#">Entrez Gene 1399 Human P46109</a>
Background:	Crk, is a transformation-specific protein that induces elevation of cellular phosphotyrosine levels, but lacks tyrosine kinase activity itself. A second protein, Nck, consists solely of three SH3 domains and one SH2 domain, while GRB2 contains an SH2 domain flanked on both sides by SH3 domains. A member of this protein class, Crk-L, is encoded by a gene located on chromosome 22, band 11, centromeric of the chronic myelogenous leukemia breakpoint region. Crk-L encodes a 303 amino acid protein with one SH2 and two SH3 domains, and a predicted molecular weight of 36 kDa.
Synonyms:	Crk-like protein; Crk L; Crkl; Crk like protein; Crkol; Oncogene CrkL

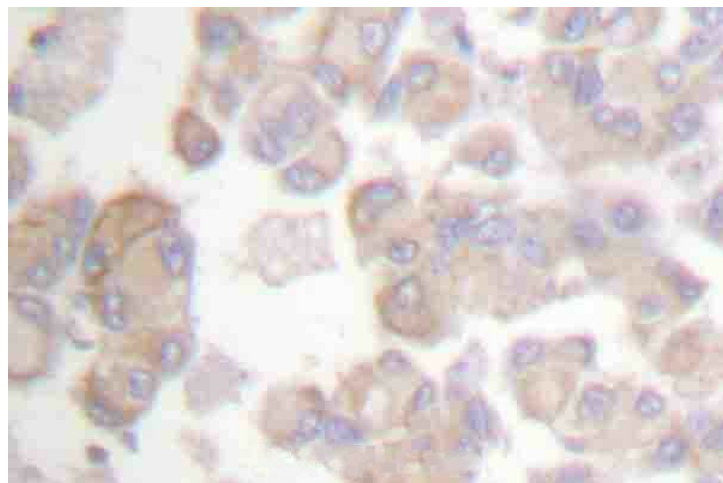

[View online »](#)

**Note:** For research use only, not for use in diagnostic procedure.

## Product images:



Western blot (WB) analysis of p-CrkL (Y207) pAb at 1:500 dilution Lane1:MCF-7 whole cell lysate(40ug) Lane2:HEK293T whole cell lysate(40ug) Lane3:PMVEC whole cell lysate(40ug) Lane4:CT26 whole cell lysate(40ug) Lane5:SGC7901 whole cell lysate(40ug)



Immunohistochemistry (IHC) analyzes of p-Crk-L (Y207) pAb in paraffin-embedded human colon cancer tissue.