

Product datasheet for **TA392884S**

p38 (CRK) Rabbit Polyclonal Antibody

Product data:

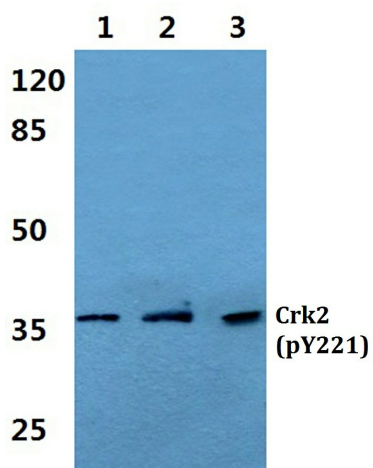
Product Type:	Primary Antibodies
Applications:	WB
Recommended Dilution:	WB: 1:500~1:1000
Reactivity:	Human
Host:	Rabbit
Isotype:	IgG
Clonality:	Polyclonal
Immunogen:	Synthetic phosphopeptide derived from human Crk2 around the phosphorylation site of Tyrosine 221.
Specificity:	Crk2 (phospho-Y221) polyclonal antibody detects endogenous levels of Crk2 protein only when phosphorylated at Tyr221.
Formulation:	Rabbit IgG, 1mg/ml in PBS with 0.02% sodium azide, 50% glycerol, pH7.2
Concentration:	1mg/ml
Conjugation:	Unconjugated
Storage:	Store at 4°C short term. Aliquot and store at -20°C long term. Avoid freeze-thaw cycles.
Stability:	1 year
Predicted Protein Size:	~ 34 kDa
Gene Name:	v-crk avian sarcoma virus CT10 oncogene homolog
Database Link:	Entrez Gene 1398 Human P46108
Background:	Crk I and Crk II are encoded by the same gene, which undergoes alternative splicing to yield these two proteins, but differ in their biological activities. Crk II has less transforming activity than Crk I, although both Crk I and Crk II bind to many tyrosine-phosphorylated proteins that bind to GRB2. In addition, Crk II becomes rapidly tyrosine-phosphorylated in response to stimulation with insulin-like growth factor I (IGF-I) and might be involved in the IGF-I receptor signalling pathway.
Synonyms:	Adapter molecule crk; CRK; CRKII; p38 CRK; Proto-oncogene c-Crk



[View online »](#)

Note: For research use only, not for use in diagnostic procedure.

Product images:



Western blot (WB) analysis of Crk2 (phospho-Y221) pAb at 1:500 dilution Lane1:A549 whole cell lysate(40ug) Lane2:Hela whole cell lysate(40ug) Lane3:MCF-7 whole cell lysate(40ug) Lane4:The Kidney tissue lysate of Rat(40ug) Lane5:The Kidney tissue lysate of Mouse(40ug)