

## Product datasheet for **TA392883**

### Phospholipase A2 (PLA2G4A) Rabbit Polyclonal Antibody

#### Product data:

Product Type:	Primary Antibodies
Applications:	WB
Recommended Dilution:	WB: 1:500~1:1000 IHC: 1:50~1:200
Reactivity:	Human, Mouse, Rat
Host:	Rabbit
Isotype:	IgG
Clonality:	Polyclonal
Immunogen:	Synthetic phosphopeptide derived from human cPLA2 around the phosphorylation site of Serine 505.
Specificity:	p-cPLA2 (S505) polyclonal antibody detects endogenous levels of cPLA2 protein only when phosphorylated at Ser505.
Formulation:	Rabbit IgG, 1mg/ml in PBS with 0.02% sodium azide, 50% glycerol, pH7.2
Concentration:	1mg/ml
Conjugation:	Unconjugated
Storage:	Store at 4°C short term. Aliquot and store at -20°C long term. Avoid freeze-thaw cycles.
Stability:	1 year
Predicted Protein Size:	~ 100 kDa
Gene Name:	phospholipase A2 group IVA
Database Link:	<a href="#">Entrez Gene 5321 Human P47712</a>



[View online »](#)

**Background:**

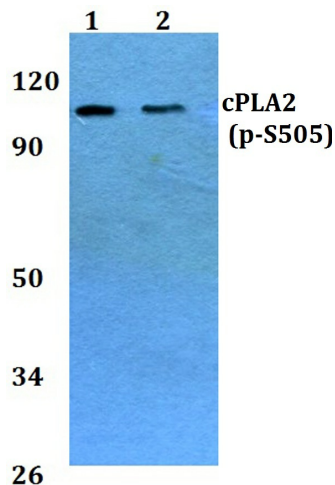
Phospholipase A2s (PLA2s) constitute a family of esterases that hydrolyze the sn-2-acyl ester bond in glycerophospholipid molecules. These enzymes are generally calcium-dependent and have been found both intra- and extracellularly. By hydrolyzing the sn-2 bond in glycerophospholipids, PLA2s release fatty acids. One such fatty acid, arachidonic acid, generates the substrates for the initiation of the arachidonic acid cascade that produces various eicosanoids (i.e. prostaglandins, leukotrienes and thromboxanes), many of which are potent mediators of inflammation. PLA2s include both the relatively low molecular weight type I and type II enzymes and the form known as cytoplasmic PLA2 (cPLA2). cPLA2 is present in the cytosol of various cells and tissues including platelets, macrophages and monoblasts; and preferentially hydrolyzes the sn-2 position of phospholipid molecules, releasing free arachidonate.

**Synonyms:**

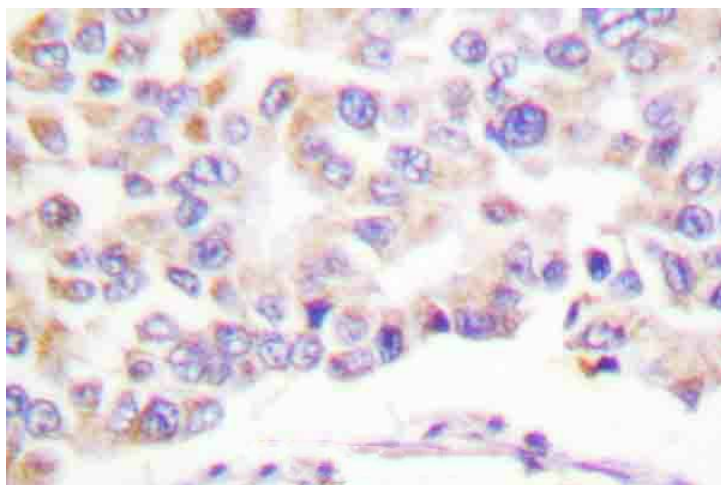
CPLA2; cPLA2; Cytosolic phospholipase A2; Phosphatidylcholine 2-acylhydrolase  
Lysophospholipase; Phospholipase A2; Phospholipase A2 group IVA; PLA2G4; PLA2G4A

**Note:**

For research use only, not for use in diagnostic procedure.

**Product images:**

Western blot (WB) analysis of p-cPLA2 (S505) pAb at 1:500 dilution Lane1:MCF-7 whole cell lysate(40ug) Lane2:A549 whole cell lysate(40ug) Lane3:The Uterus tissue lysate of Rat(40ug) Lane4:The Uterus tissue lysate of Mouse(40ug) Lane5:3T3-L1 whole cell lysate(40ug)



Immunohistochemistry (IHC) analyzes of p-cPLA2 (S505) pAb in paraffin-embedded human breast cancer tissue.