

## Product datasheet for **TA392882M**

### c-Jun (JUN) Rabbit Polyclonal Antibody

#### Product data:

Product Type:	Primary Antibodies
Applications:	WB
Recommended Dilution:	WB: 1:500~1:1000 IHC: 1:50~1:200
Reactivity:	Human, Mouse, Rat
Host:	Rabbit
Isotype:	IgG
Clonality:	Polyclonal
Immunogen:	Synthetic phosphopeptide derived from human c-Jun around the phosphorylation site of Tyrosine 170.
Specificity:	p-c-Jun (Y170) polyclonal antibody detects endogenous levels of c-Jun protein only when phosphorylated at Tyr170.
Formulation:	Rabbit IgG, 1mg/ml in PBS with 0.02% sodium azide, 50% glycerol, pH7.2
Concentration:	1mg/ml
Conjugation:	Unconjugated
Storage:	Store at 4°C short term. Aliquot and store at -20°C long term. Avoid freeze-thaw cycles.
Stability:	1 year
Predicted Protein Size:	~ 43, 48 kDa
Gene Name:	Jun proto-oncogene, AP-1 transcription factor subunit
Database Link:	<a href="#">Entrez Gene 3725 Human P05412</a>

[View online »](#)

**Background:**

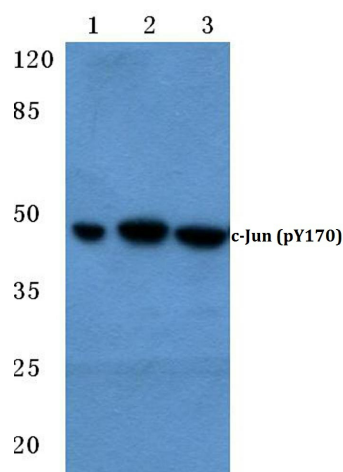
The c-Jun proto-oncogene was first identified as the cellular homolog of the avian sarcoma virus v-Jun oncogene. The c-Jun protein, along with c-Fos, is a component of the AP-1 transcriptional complex. c-Jun can form either Jun/Jun homodimers or Jun/Fos heterodimers via the leucine repeats in both proteins. Homo- and heterodimers bind to the TGACTCA consensus sequence present in numerous promoters and initially identified as the phorbol ester tumor promoter response element (TRE). Two additional genes, Jun B and Jun D, have been shown to be almost identical to c-Jun in their C-terminal regions, which are involved in dimerization and DNA binding, whereas their N-terminal domains, which are involved in transcriptional activation, diverge. All three form heterodimers among themselves and with c-Fos and other members of the Fos gene family.

**Synonyms:**

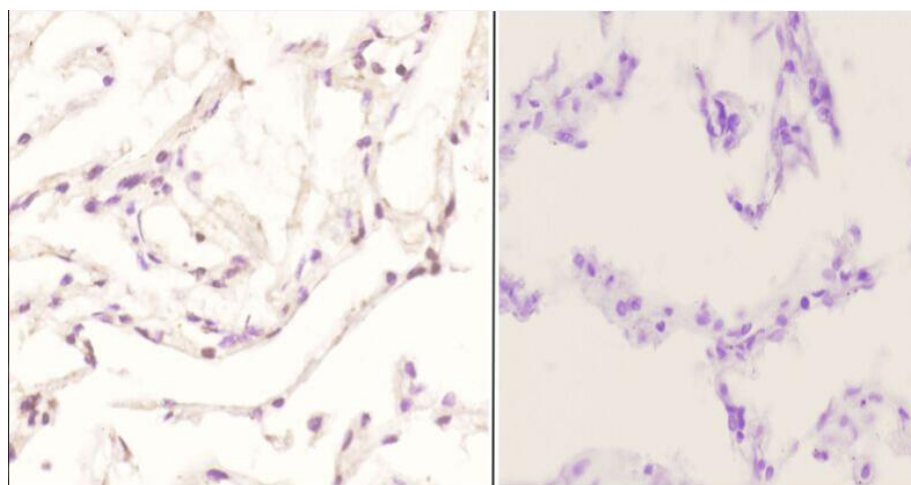
Activator protein 1; AP1; JUN; p39; Proto-oncogene c-Jun; Transcription factor AP-1; V-jun avian sarcoma virus 17 oncogene homolog

**Note:**

For research use only, not for use in diagnostic procedure.

**Product images:**


Western blot (WB) analysis of p-c-Jun (Y170) pAb at 1:500 dilution Lane1:PC3 whole cell lysate(40ug) Lane2:HEK293T whole cell lysate(40ug) Lane3:The Kidney tissue lysate of Rat(40ug) Lane4:The Kidney tissue lysate of Mouse(40ug)



Immunohistochemistry (IHC) analyzes of p-c-Jun (Y170) pAb in paraffin-embedded human lung carcinoma tissue at 1:50, showing nucleus staining. Negative control (the right) Using PBS instead of primary antibody, secondary antibody is Goat Anti-Rabbit IgG-biotin followed by avidin-peroxidase.