

## Product datasheet for **TA392878S**

### **SFRS15 (SCAF4) Rabbit Polyclonal Antibody**

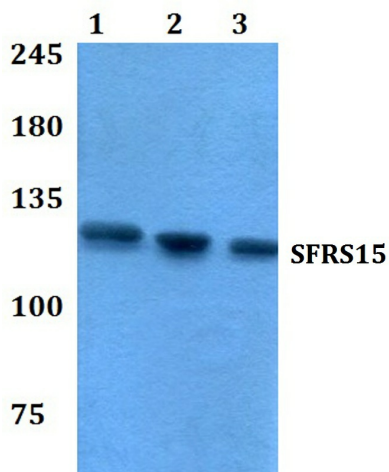
#### **Product data:**

Product Type:	Primary Antibodies
Applications:	WB
Recommended Dilution:	WB: 1:500~1:1000 IHC: 1:50~1:200
Reactivity:	Human, Mouse, Rat
Host:	Rabbit
Isotype:	IgG
Clonality:	Polyclonal
Immunogen:	Synthetic peptide, corresponding to amino acids 611-660 of Human SFRS15.
Specificity:	SFRS15 (V641) polyclonal antibody detects endogenous levels of SFRS15 protein.
Formulation:	Rabbit IgG, 1mg/ml in PBS with 0.02% sodium azide, 50% glycerol, pH7.2
Concentration:	1mg/ml
Conjugation:	Unconjugated
Storage:	Store at 4°C short term. Aliquot and store at -20°C long term. Avoid freeze-thaw cycles.
Stability:	1 year
Predicted Protein Size:	~ 126 kDa
Gene Name:	SR-related CTD associated factor 4
Database Link:	<a href="#">Entrez Gene 57466 Human O95104</a>
Background:	The family of SR factors all contain one or more RNA recognition motifs (RRM) and an SR-rich domain. They are not only essential for constitutive splicing, but also regulate splicing in a concentration-dependent manner by influencing the selection of alternative splice sites. Splicing factor arginine/serine-rich 15 (SFRS15), also designated CTD-binding SR-like protein RA4, contains one RRM and one SR-rich domains. SFRS15 interacts with C-terminal repetitive domain (CTD) of Pol II and is believed to functionally and physically link transcription and pre-mRNA processing. Localized to the nucleus, SFRS15 is expressed as two isoforms produced by alternative splicing.
Synonyms:	CTD-binding SR-like protein RA4; KIAA1172; SCAF4; SFRS15; Splicing factor, arginine/serine-rich 15; SR-related and CTD-associated factor 4

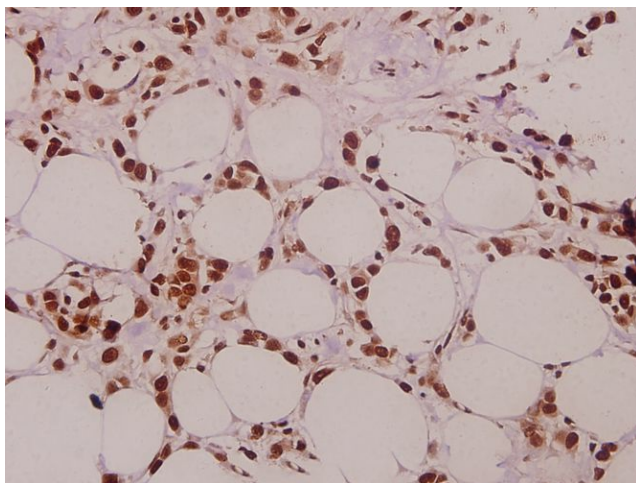

[View online »](#)

**Note:** For research use only, not for use in diagnostic procedure.

**Product images:**



Western blot (WB) analysis of SFRS15 (V641) pAb at 1:1000 dilution Lane1:C6 whole cell lysate(40ug) Lane2:CT26 whole cell lysate(40ug) Lane3:HCT116 whole cell lysate(40ug) Lane4:SGC7901 whole cell lysate(40ug) Lane5:HEK293T whole cell lysate(20ug)



Immunohistochemistry (IHC) analyzes of SFRS15 (V641) pAb in paraffin-embedded human colorectal carcinoma tissue at 1:50.