

Product datasheet for **TA392876S**

RHOG Rabbit Polyclonal Antibody

Product data:

Product Type:	Primary Antibodies
Applications:	WB
Recommended Dilution:	WB: 1:500~1:1000 IHC: 1:50~1:200
Reactivity:	Human, Mouse, Rat
Host:	Rabbit
Isotype:	IgG
Clonality:	Polyclonal
Immunogen:	Synthetic peptide, corresponding to amino acids 100-150 of Human Rho G.
Specificity:	Rho G (Q132) polyclonal antibody detects endogenous levels of Rho G protein.
Formulation:	Rabbit IgG, 1mg/ml in PBS with 0.02% sodium azide, 50% glycerol, pH7.2
Concentration:	1mg/ml
Conjugation:	Unconjugated
Storage:	Store at 4°C short term. Aliquot and store at -20°C long term. Avoid freeze-thaw cycles.
Stability:	1 year
Predicted Protein Size:	~ 21 kDa
Gene Name:	ras homolog family member G
Database Link:	Entrez Gene 391 Human P84095
Background:	<p>The Ras p21 family of guanine nucleotide proteins has been widely studied in view of its apparent role in signal transduction pathways and high frequency of mutations in human malignancies. It is now clear, however, that the Ras proteins (H-, K- and N-Ras p21) are members of a much larger superfamily of related proteins. Six members of this family, Rap 1A, Rap 1B, Rap 2, R-Ras, Ral A and Ral B, exhibit approximately 50% amino acid homology to Ras. The six mammalian Rho proteins (Rho A, B, C, G, 7 and 8) are approximately 30% homologous to Ras and are expressed in a wide range of cell types. Both Ras p21 and Rho p21, as well as other members of the Ras superfamily, contain a carboxy-terminal CAAX sequence (C, cysteine; A, aliphatic amino acid; X, any amino acid) which in the case of Ras has been shown to be essential for correct localization and function.</p>

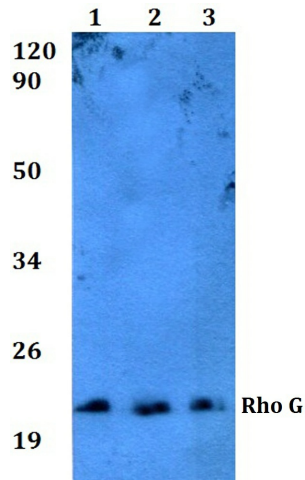


[View online »](#)

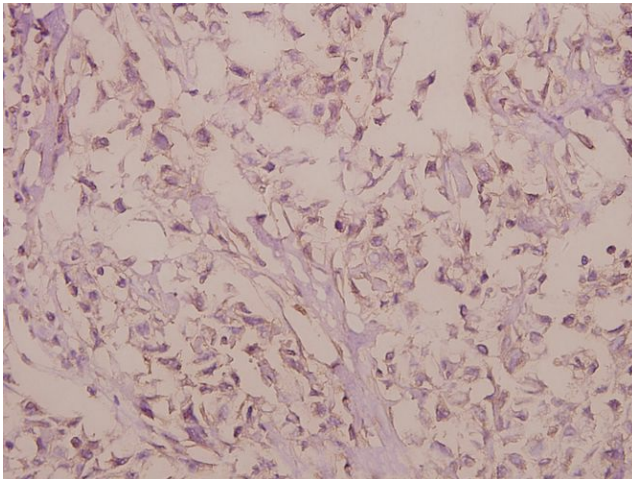
Synonyms: ARHG; Ras homolog family member G; Rho-related GTP-binding protein RhoG; RHOG; Rho G; Rho related GTP binding protein RhoG precursor

Note: For research use only, not for use in diagnostic procedure.

Product images:



Western blot (WB) analysis of Rho G (Q132) pAb at 1:500 dilution Lane1:The Spleen tissue lysate of Mouse(40ug) Lane2:The Spleen tissue lysate of Rat(40ug) Lane3:K562 whole cell lysate(40ug) Lane4:H1792 whole cell lysate(40ug)



Immunohistochemistry (IHC) analyzes of Rho G (Q132) pAb in paraffin-embedded human colorectal carcinoma tissue at 1:50.