

Product datasheet for **TA392875**

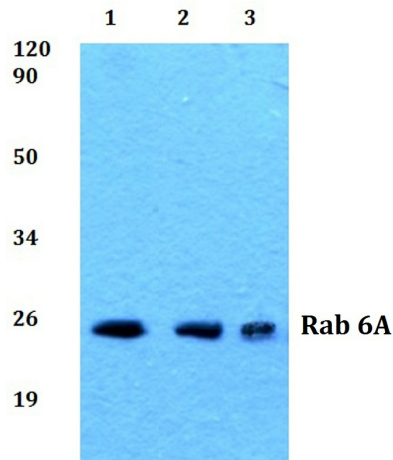
RAB6A Rabbit Polyclonal Antibody

Product data:

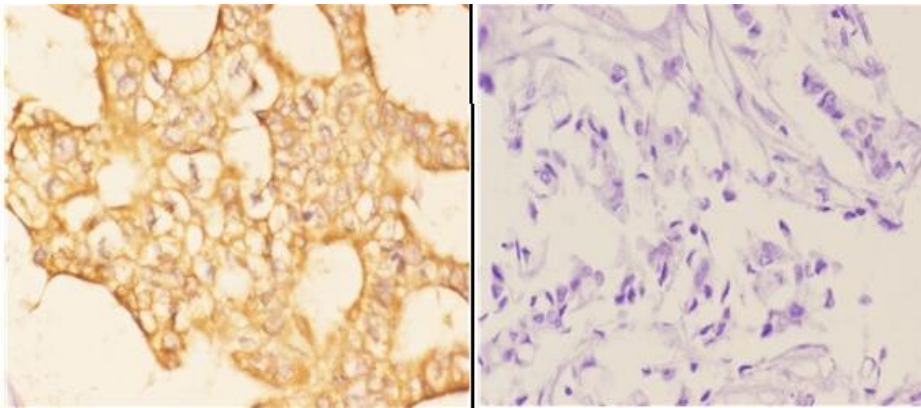
Product Type:	Primary Antibodies
Applications:	WB
Recommended Dilution:	WB: 1:500~1:1000 IHC: 1:50~1:200 IP: 1:10~1:100
Reactivity:	Human, Mouse, Rat
Host:	Rabbit
Isotype:	IgG
Clonality:	Polyclonal
Immunogen:	Synthetic peptide, corresponding to amino acids 120-170 of Human Rab 6A.
Specificity:	Rab 6A (K144) polyclonal antibody detects endogenous levels of Rab 6A protein.
Formulation:	Rabbit IgG, 1mg/ml in PBS with 0.02% sodium azide, 50% glycerol, pH7.2
Concentration:	1mg/ml
Conjugation:	Unconjugated
Storage:	Store at 4°C short term. Aliquot and store at -20°C long term. Avoid freeze-thaw cycles.
Stability:	1 year
Predicted Protein Size:	~ 24 kDa
Gene Name:	RAB6A, member RAS oncogene family
Database Link:	Entrez Gene 5870 Human P20340
Background:	Rab proteins are also an integral part of endocytic pathways. Rab 6A is a ubiquitously expressed member of the Rab family of proteins and localizes to the Golgi membrane where it regulates retrograde transport from the late endosomes via the Golgi to endoplasmic reticulum (ER) pathway. Three isoforms exist due to alternative splicing events, namely the ubiquitously expressed isoforms Rab 6A' and Rab 6A, and the brain-specific isoform Rab 6B.
Synonyms:	Rab-6; RAB6; RAB6A; Ras-related protein Rab-6A
Note:	For research use only, not for use in diagnostic procedure.



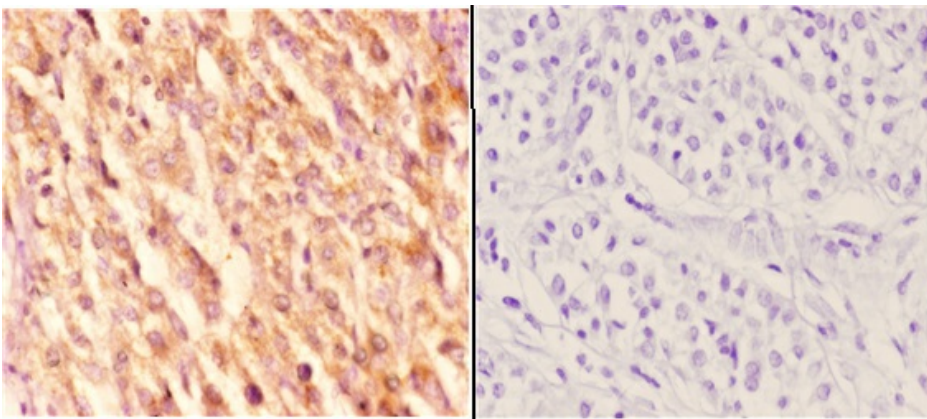
[View online »](#)

Product images:


Western blot (WB) analysis of Rab 6A (K144) pAb at 1:500 dilution Lane1:MCF-7 whole cell lysate(40ug) Lane2:HepG2 whole cell lysate(40ug) Lane3:K562 whole cell lysate(40ug) Lane4:The Testis tissue lysate of Mouse(40ug) Lane5:The Testis tissue lysate of Rat(40ug)



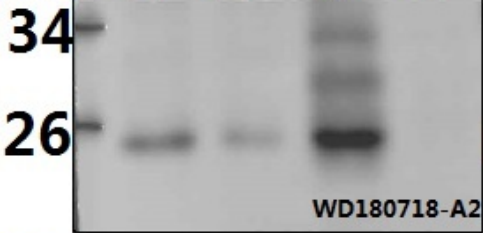
Immunohistochemistry (IHC) analyzes of Rab 6A (K144) pAb in paraffin-embedded human breast carcinoma tissue at 1:50,showing cytoplasmic and membranous staining.Negative control (the right)Using PBS instead of primary antibody, secondary antibody is Goat Anti-Rabbit IgG-biotin followed by avidin-peroxidase.



Immunohistochemistry (IHC) analyzes of Rab 6A (K144) pAb in paraffin-embedded human liver carcinoma tissue at 1:50,showing cytoplasmic and membranous staining.Negative control (the right)Using PBS instead of primary antibody, secondary antibody is Goat Anti-Rabbit IgG-biotin followed by avidin-peroxidase.

BS3920
Lot CA36131

WB: 1 2 3 4



Rab 6A

WD180718-A2

Immunoprecipitation of HEK293T cell lysate using Rab 6A (K144) pAb (Sepharose Bead Conjugate) #BD0048 (lane 2 and lane 3) and Nonspecific IgG Control (Sepharose Bead Conjugate)#BD0048 (lane 4). Lane 1 is 30% input. The western blot was probed using Rab 6A (K144) #TA392875. "↑" = supernatant; "↓" (deposition)

IP:	-	+	+	-	Rab 6A(BS3920)
	-	-	-	+	IgG(Rabbit)
	-	+	+	+	ProteinG- Agarose
	Input	↑	↓	↓	