

Product datasheet for **TA392874S**

PDK2 Rabbit Polyclonal Antibody

Product data:

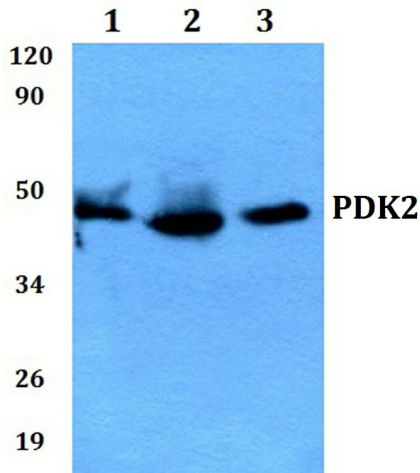
Product Type:	Primary Antibodies
Applications:	WB
Recommended Dilution:	WB 1:500 - 1:1000 IHC 1:50 - 1:100 IP 1:10 - 1:100
Reactivity:	Human, Mouse, Rat
Host:	Rabbit
Isotype:	IgG
Clonality:	Polyclonal
Immunogen:	Synthetic peptide, corresponding to amino acids 260-322 of Human PDK2.
Specificity:	PDK2 (R291) polyclonal antibody detects endogenous levels of PDK2 protein.
Formulation:	Rabbit IgG, 1mg/ml in PBS with 0.02% sodium azide, 50% glycerol, pH7.2
Concentration:	1mg/ml
Conjugation:	Unconjugated
Storage:	Store at 4°C short term. Aliquot and store at -20°C long term. Avoid freeze-thaw cycles.
Stability:	1 year
Predicted Protein Size:	~ 46 kDa
Gene Name:	pyruvate dehydrogenase kinase 2
Database Link:	Entrez Gene 5164 Human Q15119
Background:	The core of PDC is composed of sixty dihydrolypoyl acetyltransferase (E2) subunits that bind directly to PDK2 and enhance PDK2 kinase activity. Upregulation of PDK isoenzymes occurs during starvation conditions, rerouting acetyl-CoA generation by facilitating fatty acid oxidation. PDKs contain five conserved regions and are mechanistically similar to bacterial His-kinases, in that both require histidine residues for activity. In mammals, transcripts for PDK2 are ubiquitously expressed with high levels in heart and skeletal muscle and decreased levels in spleen and lung.
Synonyms:	isozyme 2; mitochondrial; PDHK2; PDK2; Pyruvate dehydrogenase kinase; Pyruvate dehydrogenase kinase isoform 2; Pyruvate dehydrogenase lipoamide kinase isozyme 2; [Pyruvate dehydrogenase [lipoamide]] kinase isozyme 2



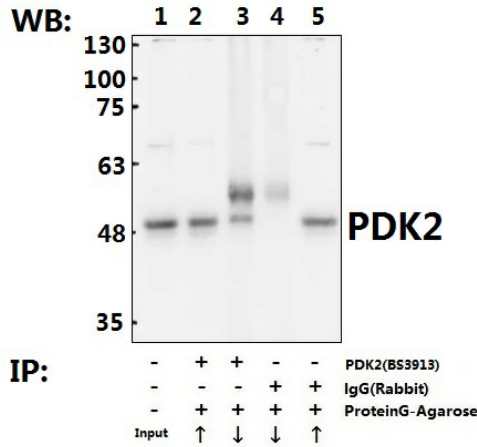
[View online »](#)

Note: For research use only, not for use in diagnostic procedure.

Product images:



Western blot (WB) analysis of PDK2 (R291) polyclonal antibody at 1:500 dilution
 Lane1:HEK293T whole cell lysate(40ug) Lane2:L02 whole cell lysate(40ug) Lane3:The brain tissue lysate of Mouse(40ug) Lane4:The brain tissue lysate of Rat(40ug) Lane5:The liver tissue lysate of Mouse(40ug) Lane6:The liver tissue lysate of Rat(40ug)



Immunoprecipitation of the Brain tissue lysate of Rat using PDK2 (R291) pAb (Sepharose Bead Conjugate) #BD0047(lane 2 and lane 3) and Nonspecific IgG Control (Sepharose Bead Conjugate)#BD0047 (lane 4 and lane 5) .Lane 1 is 30% input. The western blot was probed using PDK2 (R291) pAb #BS3628."↑"(supernatant); "↓"(deposition)