

## Product datasheet for **TA392873M**

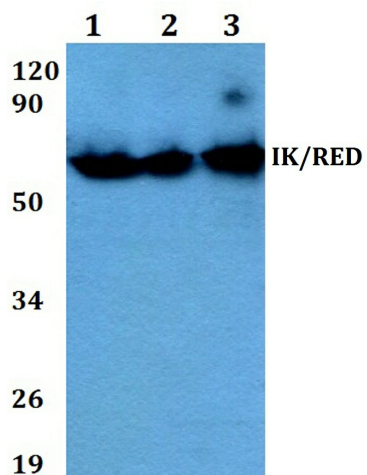
### RED (IK) Rabbit Polyclonal Antibody

#### Product data:

Product Type:	Primary Antibodies
Applications:	WB
Recommended Dilution:	WB: 1:500~1:1000 IHC: 1:50~1:200
Reactivity:	Human, Mouse, Rat
Host:	Rabbit
Isotype:	IgG
Clonality:	Polyclonal
Immunogen:	Synthetic peptide, corresponding to amino acids 530-580 of Human IK/RED.
Specificity:	IK (P555) polyclonal antibody detects endogenous levels of IK protein.
Formulation:	Rabbit IgG, 1mg/ml in PBS with 0.02% sodium azide, 50% glycerol, pH7.2
Concentration:	1mg/ml
Conjugation:	Unconjugated
Storage:	Store at 4°C short term. Aliquot and store at -20°C long term. Avoid freeze-thaw cycles.
Stability:	1 year
Predicted Protein Size:	~ 66 kDa
Gene Name:	IK cytokine, down-regulator of HLA II
Database Link:	<a href="#">Entrez Gene 3550 Human Q13123</a>
Background:	Protein Red, Cytokine IK. Function: May bind to chromatin. Tissue specificity: Ubiquitous. Sequence similarities: Belongs to the RED family. Developmental stage: Expressed at similar levels in fetal and adult tissues. Post-translational modifications: Phosphorylated upon DNA damage, probably by ATM or ATR. Cellular localization: Nucleus.
Synonyms:	Cytokine IK; IK factor; Protein Red; Protein RER; RED; RER
Note:	For research use only, not for use in diagnostic procedure.

[View online »](#)

## Product images:



Western blot (WB) analysis of IK/RED (P555) pAb at 1:500 dilution Lane1:CT26 whole cell lysate(40ug) Lane2:The Brain tissue lysate of Rat(40ug) Lane3:Hela whole cell lysate(40ug) Lane4:MCF-7 whole cell lysate(40ug) Lane5:H1792 whole cell lysate(40ug)