

## Product datasheet for **TA392873**

### RED (IK) Rabbit Polyclonal Antibody

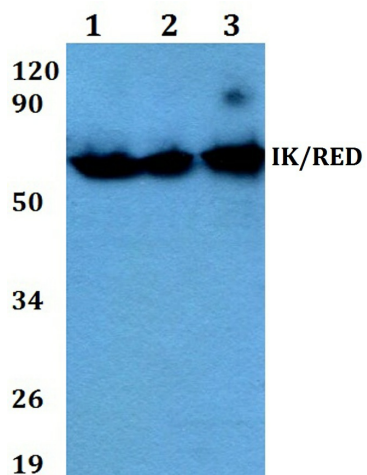
#### Product data:

|                         |   |
|-------------------------|---|
| Product Type:           | Primary Antibodies  |
| Applications:           | WB  |
| Recommended Dilution:   | WB: 1:500~1:1000 IHC: 1:50~1:200  |
| Reactivity:             | Human, Mouse, Rat   |
| Host:                   | Rabbit  |
| Isotype:                | IgG   |
| Clonality:              | Polyclonal  |
| Immunogen:              | Synthetic peptide, corresponding to amino acids 530-580 of Human IK/RED.  |
| Specificity:            | IK (P555) polyclonal antibody detects endogenous levels of IK protein.  |
| Formulation:            | Rabbit IgG, 1mg/ml in PBS with 0.02% sodium azide, 50% glycerol, pH7.2  |
| Concentration:          | 1mg/ml  |
| Conjugation:            | Unconjugated  |
| Storage:                | Store at 4°C short term. Aliquot and store at -20°C long term. Avoid freeze-thaw cycles.  |
| Stability:              | 1 year  |
| Predicted Protein Size: | ~ 66 kDa  |
| Gene Name:              | IK cytokine, down-regulator of HLA II   |
| Database Link:          | <a href="#">Entrez Gene 3550 Human Q13123</a>   |
| Background:             | Protein Red, Cytokine IK. Function: May bind to chromatin. Tissue specificity: Ubiquitous. Sequence similarities: Belongs to the RED family. Developmental stage: Expressed at similar levels in fetal and adult tissues. Post-translational modifications: Phosphorylated upon DNA damage, probably by ATM or ATR. Cellular localization: Nucleus. |
| Synonyms:               | Cytokine IK; IK factor; Protein Red; Protein RER; RED; RER  |
| Note:                   | For research use only, not for use in diagnostic procedure.   |



[View online »](#)

## Product images:



Western blot (WB) analysis of IK/RED (P555) pAb at 1:500 dilution Lane1:CT26 whole cell lysate(40ug) Lane2:The Brain tissue lysate of Rat(40ug) Lane3:HeLa whole cell lysate(40ug) Lane4:MCF-7 whole cell lysate(40ug) Lane5:H1792 whole cell lysate(40ug)