

## Product datasheet for **TA392872M**

### Carboxypeptidase M (CPM) Rabbit Polyclonal Antibody

#### Product data:

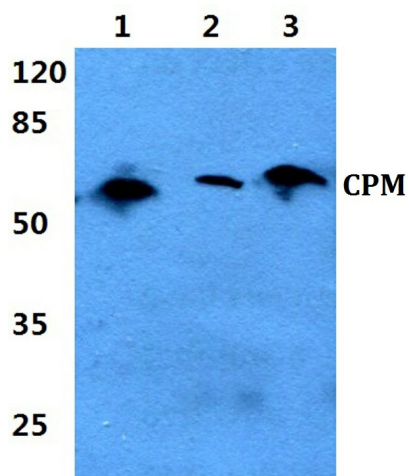
Product Type:	Primary Antibodies
Applications:	WB
Recommended Dilution:	WB: 1:500~1:1000
Reactivity:	Human, Mouse, Rat
Host:	Rabbit
Isotype:	IgG
Clonality:	Polyclonal
Immunogen:	Synthetic peptide, corresponding to amino acids 80-130 of Human CPM.
Specificity:	CPM (L113) polyclonal antibody detects endogenous levels of CPM protein.
Formulation:	Rabbit IgG, 1mg/ml in PBS with 0.02% sodium azide, 50% glycerol, pH7.2
Concentration:	1mg/ml
Conjugation:	Unconjugated
Storage:	Store at 4°C short term. Aliquot and store at -20°C long term. Avoid freeze-thaw cycles.
Stability:	1 year
Predicted Protein Size:	~ 51 kDa
Gene Name:	carboxypeptidase M
Database Link:	<a href="#">Entrez Gene 1368 Human P14384</a>
Background:	Carboxypeptidase M (CPM) is a 443 amino acid protein belonging to the metallo-carboxypeptidase (metallo-CP) family. Localized to the cell membrane, CPM contains hydrophobic regions in the N and C- termini and has six potential asparagine-linked glycosylation sites. Functionally, CPM specifically removes C-terminal basic amino acids (arginine or lysine) from proteins and polypeptides and is believed to play a role in monocyte to macrophage differentiation. CPM is also thought to play an important role in the control of peptide hormone and growth factor activity at the cell surface, as well as in the membrane-localized degradation of extracellular proteins. Three isoforms of this protein exist as a result of alternative splicing events.
Synonyms:	Carboxypeptidase M; CBPM; CPM; Renal carboxypeptidase; Urinary carboxypeptidase B



[View online »](#)

**Note:** For research use only, not for use in diagnostic procedure.

**Product images:**



Western blot (WB) analysis of CPM (L113) pAb at 1:500 dilution Lane1:Hela whole cell lysate(40ug)  
Lane2:The Uterus tissue lysate of Mouse(40ug)  
Lane3:The Uterus tissue lysate of Rat(40ug)