

## Product datasheet for **TA392869M**

### Angiopoietin like 7 (ANGPTL7) Rabbit Polyclonal Antibody

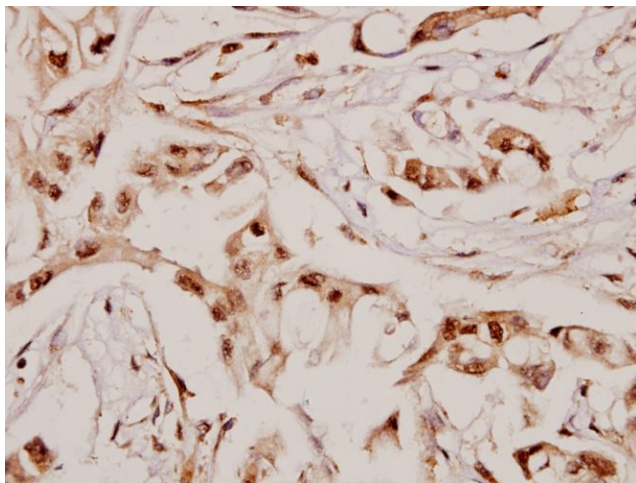
#### Product data:

Product Type:	Primary Antibodies
Applications:	WB
Recommended Dilution:	WB: 1:500~1:1000 IHC: 1:50~1:200
Reactivity:	Human, Mouse, Rat
Host:	Rabbit
Isotype:	IgG
Clonality:	Polyclonal
Immunogen:	Synthetic peptide, corresponding to amino acids 321-370 of Human Angptl7.
Specificity:	Angptl7 (P346) polyclonal antibody detects endogenous levels of Angptl7 protein.
Formulation:	Rabbit IgG, 1mg/ml in PBS with 0.02% sodium azide, 50% glycerol, pH7.2
Concentration:	1mg/ml
Conjugation:	Unconjugated
Storage:	Store at 4°C short term. Aliquot and store at -20°C long term. Avoid freeze-thaw cycles.
Stability:	1 year
Predicted Protein Size:	~ 40 kDa
Gene Name:	angiopoietin like 7
Database Link:	<a href="#">Entrez Gene 10218 Human O43827</a>
Background:	Angptl7 (angiopoietin-like 7), alternately known as cornea-derived transcript 6 protein (CDT6) or AngX, is a 346 amino acid secreted protein that is expressed specifically in the stromal layer of cornea. Angptl7 forms disulfide-linked homotetramers via coiled-coil interactions and contains one fibrinogen C-terminal domain. Overexpressed in patients with glaucoma, Angptl7 serves as a potential therapeutic target for glaucoma and has been found to increase collagen expression. The gene encoding Angptl7 maps to human chromosome 1, which spans 260 million base pairs, contains over 3,000 genes and comprises nearly 8% of the human genome.
Synonyms:	Angiopoietin-like factor; Angiopoietin-like protein 7; Angiopoietin-related protein 7; ANGPTL7; CDT6; Cornea-derived transcript 6 protein; ORF Names: UNQ313/PRO356

[View online »](#)

**Note:** For research use only, not for use in diagnostic procedure.

**Product images:**



Immunohistochemistry (IHC) analyzes of Angptl7 (P346) pAb in paraffin-embedded human breast carcinoma tissue at 1:50.