

## Product datasheet for **TA392866S**

### RPL7 Rabbit Polyclonal Antibody

#### Product data:

Product Type:	Primary Antibodies
Applications:	WB
Recommended Dilution:	WB: 1:500~1:1000 IHC: 1:50~1:200 IP: 1:10~1:100
Reactivity:	Human, Mouse, Rat
Host:	Rabbit
Isotype:	IgG
Clonality:	Polyclonal
Immunogen:	Synthetic peptide, corresponding to amino acids 220-270 of Human Ribosomal Protein L7.
Specificity:	Ribosomal Protein L7 (N248) polyclonal antibody detects endogenous levels of Ribosomal Protein L7 protein.
Formulation:	Rabbit IgG, 1mg/ml in PBS with 0.02% sodium azide, 50% glycerol, pH7.2
Concentration:	1mg/ml
Conjugation:	Unconjugated
Storage:	Store at 4°C short term. Aliquot and store at -20°C long term. Avoid freeze-thaw cycles.
Stability:	1 year
Predicted Protein Size:	~ 29 kDa
Gene Name:	ribosomal protein L7
Database Link:	<a href="#">Entrez Gene 6129 Human P18124</a>



[View online »](#)

**Background:**

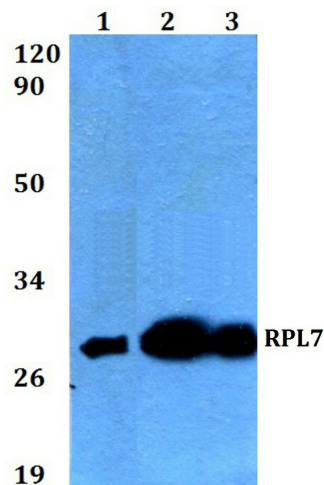
Ribosomes, the organelles that catalyze protein synthesis, consist of a small 40S subunit and a large 60S subunit. Together these subunits are composed of 4 RNA species and approximately 80 structurally distinct proteins. This gene encodes a ribosomal protein that is a component of the 60S subunit. The protein belongs to the L30P family of ribosomal proteins. It contains an N-terminal basic region-leucine zipper (BZIP)-like domain and the RNP consensus submotif RNP2. In vitro the BZIP-like domain mediates homodimerization and stable binding to DNA and RNA, with a preference for 28S rRNA and mRNA. The protein can inhibit cell-free translation of mRNAs, suggesting that it plays a regulatory role in the translation apparatus. It is located in the cytoplasm. The protein has been shown to be an autoantigen in patients with systemic autoimmune diseases, such as systemic lupus erythematosus. As is typical for genes encoding ribosomal proteins, there are multiple processed pseudogenes of this gene dispersed through the genome.

**Synonyms:**

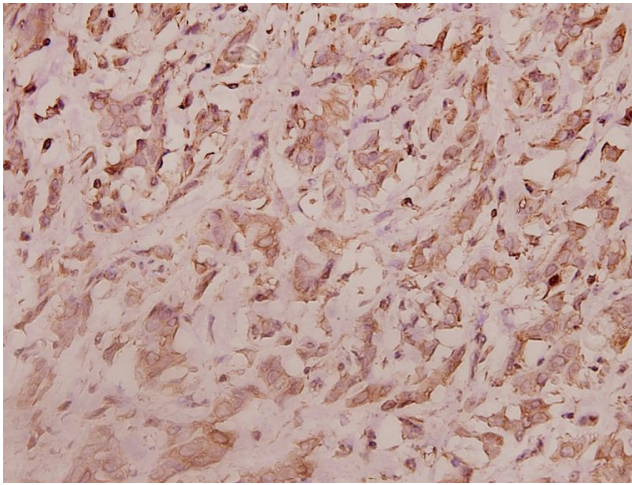
60S ribosomal protein L7; RPL7

**Note:**

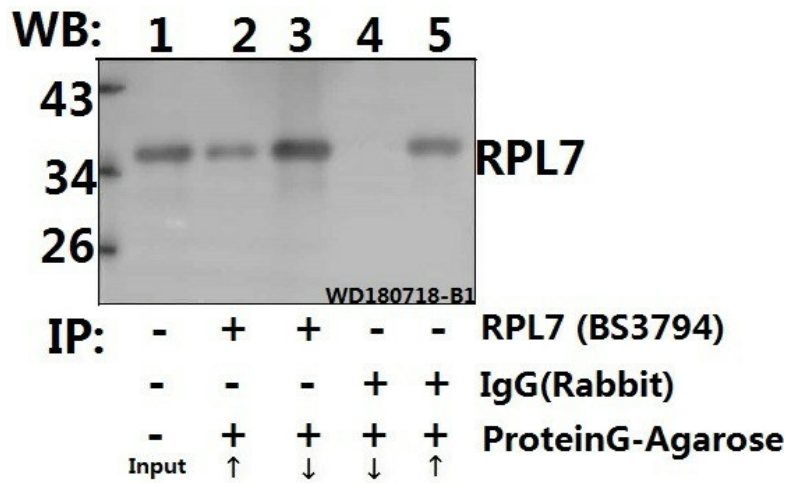
For research use only, not for use in diagnostic procedure.

**Product images:**

Western blot (WB) analysis of RPL7 (N248) polyclonal antibody at 1:500 dilution. Lane 1: SK-OVCAR3 whole cell lysate (40ug) Lane 2: MCF-7 whole cell lysate (40ug) Lane 3: L02 whole cell lysate (40ug) Lane 4: The Spleen tissue lysate of Rat (40ug) Lane 5: The Spleen tissue lysate of Mouse (40ug)



Immunohistochemistry (IHC) analyzes of RPL7 (N248) pAb in paraffin-embedded human breast carcinoma tissue at 1:100.



Immunoprecipitation of HEK293T cell lysate using RPL7 (N248) pAb (Sepharose Bead Conjugate) #BD0048(lane 2 and lane 3) and Nonspecific IgG Control (Sepharose Bead Conjugate) #BD0048 (lane 4 and lane 5) .Lane 1 is 30% input. The western blot was probed using RPL7 (N248) # [TA392866]. "↑"supernatant; "↓(deposition"