

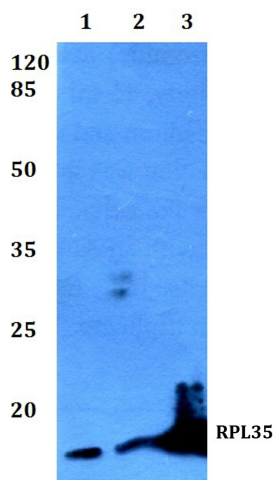
## Product datasheet for **TA392865M**

### RPL35 Rabbit Polyclonal Antibody

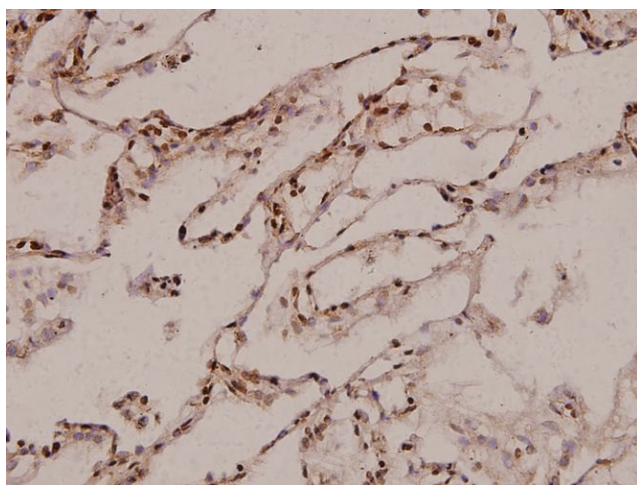
#### Product data:

Product Type:	Primary Antibodies
Applications:	WB
Recommended Dilution:	WB: 1:500~1:1000 IHC: 1:50~1:200 IP: 1:10~1:100
Reactivity:	Human, Mouse, Rat
Host:	Rabbit
Isotype:	IgG
Clonality:	Polyclonal
Immunogen:	Synthetic peptide, corresponding to amino acids 70-120 of Human Ribosomal Protein L35.
Specificity:	Ribosomal Protein L35 (M91) polyclonal antibody detects endogenous levels of Ribosomal Protein L35 protein.
Formulation:	Rabbit IgG, 1mg/ml in PBS with 0.02% sodium azide, 50% glycerol, pH7.2
Concentration:	1mg/ml
Conjugation:	Unconjugated
Storage:	Store at 4°C short term. Aliquot and store at -20°C long term. Avoid freeze-thaw cycles.
Stability:	1 year
Predicted Protein Size:	~ 15 kDa
Gene Name:	ribosomal protein L35
Database Link:	<a href="#">Entrez Gene 11224 Human P42766</a>
Background:	Ribosomes, the organelles that catalyze protein synthesis, consist of a small 40S subunit and a large 60S subunit. Together these subunits are composed of 4 RNA species and approximately 80 structurally distinct proteins. This gene encodes a ribosomal protein that is a component of the 60S subunit. The protein belongs to the L29P family of ribosomal proteins. It is located in the cytoplasm. As is typical for genes encoding ribosomal proteins, there are multiple processed pseudogenes of this gene dispersed through the genome.
Synonyms:	60S ribosomal protein L35; L35; Ribosomal protein L35; RL35; RPL35
Note:	For research use only, not for use in diagnostic procedure.

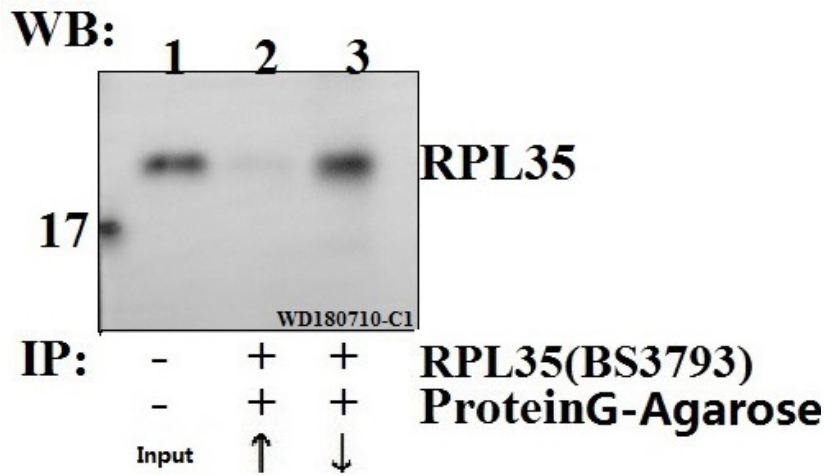

[View online »](#)

**Product images:**


Western blot (WB) analysis of RPL35 (M91) pAb at 1:500 dilution Lane1:Hela whole cell lysate(20ug) Lane2:HEK293T whole cell lysate(20ug) Lane3:The Ovary tissue lysate of Rat(20ug) Lane4:The Kidney tissue lysate of Mouse(20ug)



Immunohistochemistry (IHC) analyzes of RPL35 (M91) pAb in paraffin-embedded human lung carcinoma tissue at 1:100.



Immunoprecipitation of HEK293T cell lysate using RPL35 (M91) pAb (Sepharose Bead Conjugate) #BD0048(lane 2 and lane 3) .Lane 1 is 30% input. The western blot was probed using RPL35 (M91) #[TA392865].“↑”supernatant; “↓”(deposition)