

Product datasheet for **TA392864**

RPL28 Rabbit Polyclonal Antibody

Product data:

| | |
|-------------------------|---|
| Product Type: | Primary Antibodies |
| Applications: | WB |
| Recommended Dilution: | WB: 1:500~1:1000 IHC: 1:50~1:200 IP: 1:10~1:100 |
| Reactivity: | Human, Mouse, Rat |
| Host: | Rabbit |
| Isotype: | IgG |
| Clonality: | Polyclonal |
| Immunogen: | Synthetic peptide, corresponding to amino acids 50-100 of Human Ribosomal Protein L28. |
| Specificity: | Ribosomal Protein L28 (Y77) polyclonal antibody detects endogenous levels of Ribosomal Protein L28 protein. |
| Formulation: | Rabbit IgG, 1mg/ml in PBS with 0.02% sodium azide, 50% glycerol, pH7.2 |
| Concentration: | 1mg/ml |
| Conjugation: | Unconjugated |
| Storage: | Store at 4°C short term. Aliquot and store at -20°C long term. Avoid freeze-thaw cycles. |
| Stability: | 1 year |
| Predicted Protein Size: | ~ 16 kDa |
| Gene Name: | ribosomal protein L28 |
| Database Link: | Entrez Gene 6158 Human P46779 |



[View online »](#)

Background:

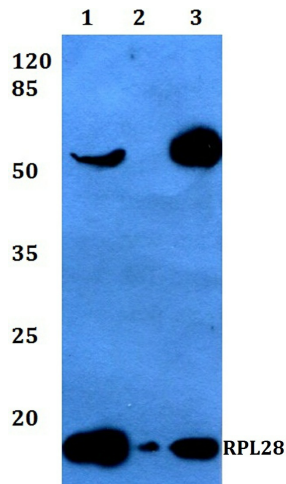
Ribosomes, the organelles that catalyze protein synthesis, consist of a small 40S subunit and a large 60S subunit. Together these subunits are composed of 4 RNA species and approximately 80 structurally distinct proteins. This gene encodes a ribosomal protein that is a component of the 60S subunit. The protein belongs to the L28E family of ribosomal proteins. It is located in the cytoplasm. Variable expression of this gene in colorectal cancers compared to adjacent normal tissues has been observed, although no correlation between the level of expression and the severity of the disease has been found. As is typical for genes encoding ribosomal proteins, there are multiple processed pseudogenes of this gene dispersed through the genome. Alternative splicing results in multiple transcript variants encoding distinct isoforms.

Synonyms:

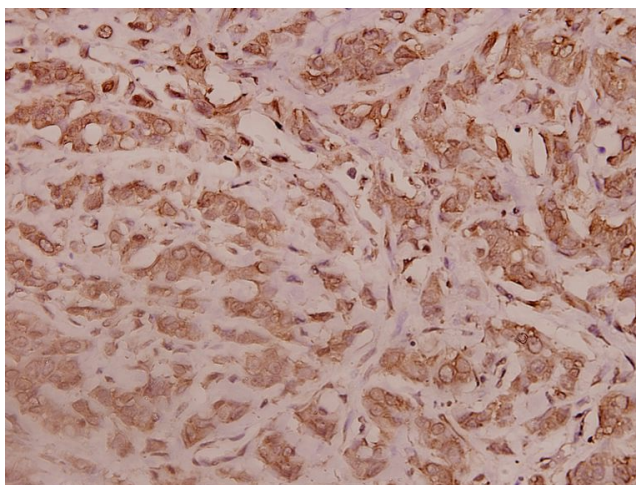
60S ribosomal protein L28; RPL 28

Note:

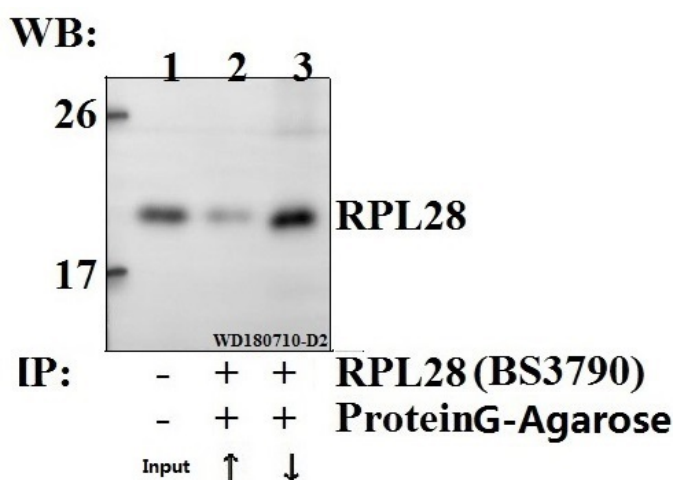
For research use only, not for use in diagnostic procedure.

Product images:

Western blot (WB) analysis of RPL28 (Y77) pAb at 1:500 dilution Lane1:HEK293T whole cell lysate(40ug) Lane2:PC3 whole cell lysate(20ug) Lane3:A549 whole cell lysate(20ug) Lane4:The Lung tissue lysate of Rat(20ug) Lane5:The Kidney tissue lysate of Mouse(40ug)



Immunohistochemistry (IHC) analyzes of RPL28 (Y77) pAb in paraffin-embedded human breast carcinoma tissue at 1:100.



Immunoprecipitation of HEK293T cell lysate using RPL28 (Y77) pAb (Sepharose Bead Conjugate) #BD0048(lane 2 and lane 3) .Lane 1 is 30% input. The western blot was probed using RPL28 (Y77) #TA392864. "↑"supernatant"; "↓(deposition"