

Product datasheet for **TA392863S**

RPL18 Rabbit Polyclonal Antibody

Product data:

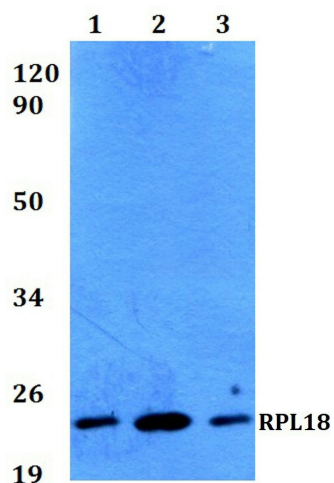
Product Type:	Primary Antibodies
Applications:	WB
Recommended Dilution:	WB: 1:500~1:1000 IHC: 1:50~1:200 IP: 1:10~1:100
Reactivity:	Human, Mouse, Rat
Host:	Rabbit
Isotype:	IgG
Clonality:	Polyclonal
Immunogen:	Synthetic peptide, corresponding to amino acids 130-180 of Human Ribosomal Protein L18.
Specificity:	Ribosomal Protein L18 (H151) polyclonal antibody detects endogenous levels of Ribosomal Protein L18 protein.
Formulation:	Rabbit IgG, 1mg/ml in PBS with 0.02% sodium azide, 50% glycerol, pH7.2
Concentration:	1mg/ml
Conjugation:	Unconjugated
Storage:	Store at 4°C short term. Aliquot and store at -20°C long term. Avoid freeze-thaw cycles.
Stability:	1 year
Predicted Protein Size:	~ 22 kDa
Gene Name:	ribosomal protein L18
Database Link:	Entrez Gene 6141 Human Q07020
Background:	Ribosomes, the organelles that catalyze protein synthesis, consist of a small 40S subunit and a large 60S subunit. Together these subunits are composed of 4 RNA species and approximately 80 structurally distinct proteins. This gene encodes a member of the L18E family of ribosomal proteins that is a component of the 60S subunit. As is typical for genes encoding ribosomal proteins, there are multiple processed pseudogenes of this gene dispersed through the genome. Alternatively spliced transcript variants encoding multiple isoforms have been observed for this gene.
Synonyms:	60S ribosomal protein L18; Ribosomal protein L18; RPL18



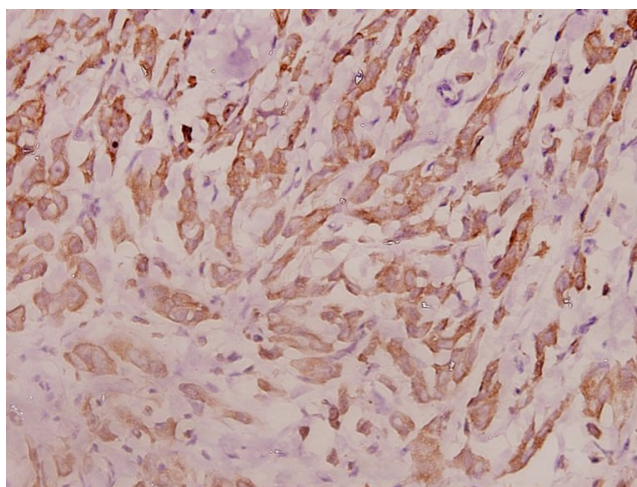
[View online »](#)

Note: For research use only, not for use in diagnostic procedure.

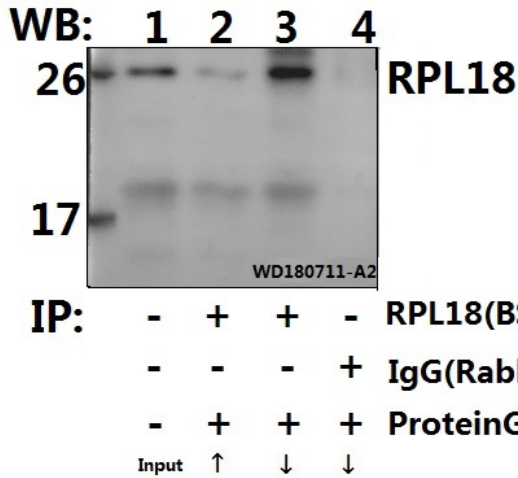
Product images:



Western blot (WB) analysis of RPL18 (H151) pAb at 1:500 dilution Lane1:HepG2 whole cell lysate(20ug) Lane2:PC3 whole cell lysate(20ug) Lane3:HEK293T whole cell lysate(10ug) Lane4:The Lung tissue lysate of Rat(10ug) Lane5:The Kidney tissue lysate of Mouse(40ug)



Immunohistochemistry (IHC) analyzes of RPL18 (H151) pAb in paraffin-embedded human breast carcinoma tissue at 1:100.



Immunoprecipitation of HEK293T cell lysate using RPL18 (H151) pAb (Sepharose Bead Conjugate) #BD0048(lane 2 and lane 3) and Nonspecific IgG Control (Sepharose Bead Conjugate)#BD0048 (lane 4) .Lane 1 is 30% input. The western blot was probed using RPL18 (H151) #[TA392863]. "↑"supernatant; "↓(deposition"