

Product datasheet for **TA392861S**

MRPS9 Rabbit Polyclonal Antibody

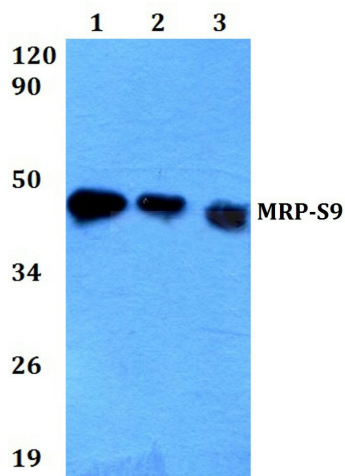
Product data:

Product Type:	Primary Antibodies
Applications:	WB
Recommended Dilution:	WB: 1:500~1:1000 IHC: 1:50~1:200
Reactivity:	Human
Host:	Rabbit
Isotype:	IgG
Clonality:	Polyclonal
Immunogen:	Synthetic peptide, corresponding to amino acids 100-150 of Human MRP-S9.
Specificity:	MRP-S9 (F132) polyclonal antibody detects endogenous levels of MRP-S9 protein.
Formulation:	Rabbit IgG, 1mg/ml in PBS with 0.02% sodium azide, 50% glycerol, pH7.2
Concentration:	1mg/ml
Conjugation:	Unconjugated
Storage:	Store at 4°C short term. Aliquot and store at -20°C long term. Avoid freeze-thaw cycles.
Stability:	1 year
Predicted Protein Size:	~ 46 kDa
Gene Name:	mitochondrial ribosomal protein S9
Database Link:	Entrez Gene 64965 Human P82933
Background:	Mammalian mitochondrial ribosomes (mitoribosomes) are responsible for protein synthesis within the mitochondrion. The mitoribosomes are composed of a 4:1 ratio of protein to RNA, with the proteins forming two subunits, the 28S subunit and the 39S subunit. Across species, the proteins that make up the mitoribosome subunits vary greatly in sequence, preventing easy recognition by sequence homology. MRP-S9 (mitochondrial 28S ribosomal protein S9), also known as RPMS9, is a 396 amino acid mitochondrial ribosomal protein. Localized to mitochondria, MRP-S9 is present in the 28S subunit of the mitoribosomes, which comprises a 12S rRNA and at least 30 distinct proteins.
Synonyms:	28S ribosomal protein S9, mitochondrial; MRP-S9; MRPS9; RPMS9; S9mt

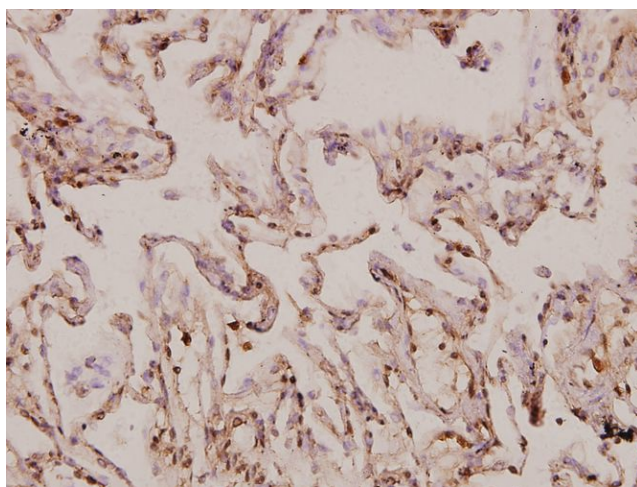
[View online »](#)

Note: For research use only, not for use in diagnostic procedure.

Product images:



Western blot (WB) analysis of MRP-S9 (F132) pAb at 1:500 dilution Lane1:HepG2 whole cell lysate(40ug) Lane2:HEK293T whole cell lysate(40ug) Lane3:PC3 whole cell lysate(40ug)



Immunohistochemistry (IHC) analyzes of MRP-S9 (F132) pAb in paraffin-embedded human lung carcinoma tissue at 1:100.