

Product datasheet for **TA392860M**

MRPS35 Rabbit Polyclonal Antibody

Product data:

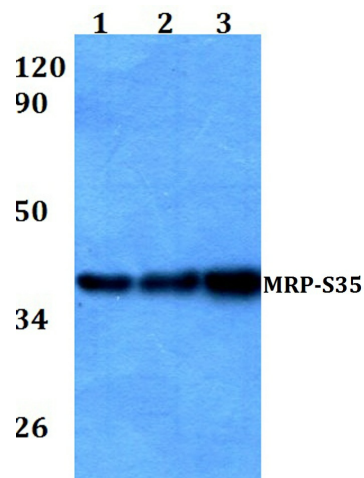
Product Type:	Primary Antibodies
Applications:	WB
Recommended Dilution:	WB: 1:500~1:1000 IHC: 1:50~1:200
Reactivity:	Human
Host:	Rabbit
Isotype:	IgG
Clonality:	Polyclonal
Immunogen:	Synthetic peptide, corresponding to amino acids 220-270 of Human MRP-S35.
Specificity:	MRP-S35 (I252) polyclonal antibody detects endogenous levels of MRP-S35 protein.
Formulation:	Rabbit IgG, 1mg/ml in PBS with 0.02% sodium azide, 50% glycerol, pH7.2
Concentration:	1mg/ml
Conjugation:	Unconjugated
Storage:	Store at 4°C short term. Aliquot and store at -20°C long term. Avoid freeze-thaw cycles.
Stability:	1 year
Predicted Protein Size:	~ 37 kDa
Gene Name:	mitochondrial ribosomal protein S35
Database Link:	Entrez Gene 60488 Human P82673
Background:	Mammalian mitochondrial ribosomes (mitoribosomes) are responsible for protein synthesis within the mitochondrion. The mitoribosomes are composed of a 4:1 ratio of protein to RNA, with the proteins forming two subunits, the 28S subunit and the 39S subunit. Across species, the proteins that make up the mitoribosome subunits vary greatly in sequence, preventing easy recognition by sequence homology. MRP-S35 (mitochondrial ribosomal protein S35), also known as MDS023, MRPS28 or HDCMD11P, is a 323 amino acid protein that localizes to the mitochondrion, where it exists as a component of the 28S ribosomal subunit and works in conjunction with other MRPs to mediate protein synthesis. Existing as two alternatively spliced isoforms, MRP-S35 is encoded by a gene located on human chromosome 10, which houses over 1,200 genes and comprises nearly 4.5% of the human genome.


[View online »](#)

Synonyms: 28S ribosomal protein S28, mitochondrial; 28S ribosomal protein S35, mitochondrial; HDCMD11P; MDS023; MRP-S28; MRP-S35; MRPS28; MRPS35; PSEC0213; S28mt; S35mt

Note: For research use only, not for use in diagnostic procedure.

Product images:



Western blot (WB) analysis of MRP-S35 (I252) pAb at 1:500 dilution Lane1:HEK293T whole cell lysate(40ug) Lane2:PC3 whole cell lysate(40ug) Lane3:A549 whole cell lysate(40ug) Lane4:K562 whole cell lysate(40ug)