

## Product datasheet for **TA392859S**

### 26S proteasome non ATPase regulatory subunit 12 (PSMD12) Rabbit Polyclonal Antibody

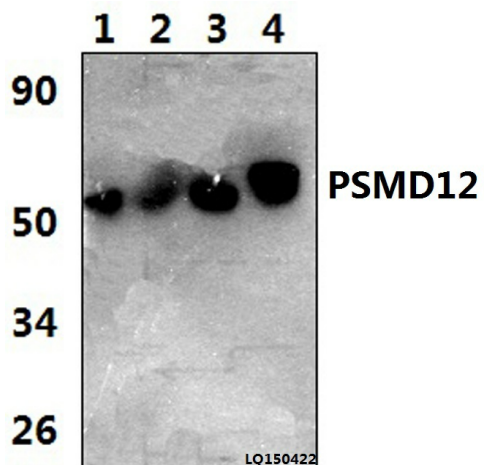
#### Product data:

Product Type:	Primary Antibodies
Applications:	WB
Recommended Dilution:	WB: 1:500~1:1000 IHC: 1:50~1:200
Reactivity:	Human, Mouse, Rat
Host:	Rabbit
Isotype:	IgG
Clonality:	Polyclonal
Immunogen:	Synthetic peptide, corresponding to amino acids 161-210 of Human PSMD12.
Specificity:	PSMD12 (I186) polyclonal antibody detects endogenous levels of PSMD12 protein.
Formulation:	Rabbit IgG, 1mg/ml in PBS with 0.02% sodium azide, 50% glycerol, pH7.2
Concentration:	1mg/ml
Conjugation:	Unconjugated
Storage:	Store at 4°C short term. Aliquot and store at -20°C long term. Avoid freeze-thaw cycles.
Stability:	1 year
Predicted Protein Size:	~ 53, 56 kDa
Gene Name:	proteasome 26S subunit, non-ATPase 12
Database Link:	<a href="#">Entrez Gene 5718 Human O00232</a>
Background:	PSMD12 (proteasome (prosome, macropain) 26S subunit, non-ATPase, 12), also known as p55 or Rpn5, is a 456 amino acid protein belonging to the proteasome subunit p55 family. PSMD12 acts as a regulatory subunit of the 26S Proteasome and is a component of the PA700 complex. PSMD12 contains one PCI domain.
Synonyms:	26S proteasome non-ATPase regulatory subunit 12; 26S proteasome regulatory subunit p55; 26S proteasome regulatory subunit RPN5; macropain) 26S subunit; MGC75406; non ATPase12; proteasome (prosome; Proteasome 26S non ATPase subunit 12 isoform 2; PSD12; PSMD12; Rpn5
Note:	For research use only, not for use in diagnostic procedure.



[View online »](#)

## Product images:



Western blot (WB) analysis of PSMD12 (I186) polyclonal antibody at 1:1000 dilution  
Lane1:HELA whole cell lysate(42ug) Lane2:LO2 whole cell lysate(38ug) Lane3:The Kidney tissue lysate of Rat(47ug) Lane4:The Kidney tissue lysate of Mouse(37ug)