

## Product datasheet for **TA392858S**

### PSMD11 Rabbit Polyclonal Antibody

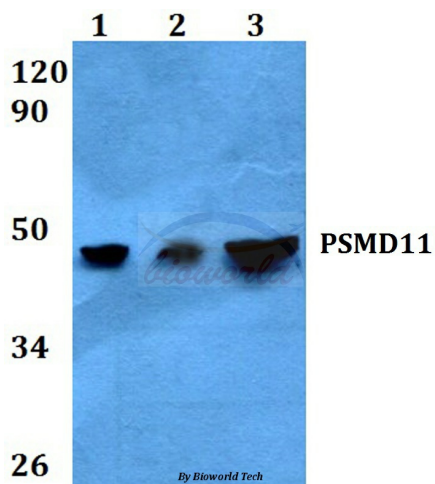
#### Product data:

Product Type:	Primary Antibodies
Applications:	WB
Recommended Dilution:	WB: 1:500~1:1000 IHC: 1:50~1:200
Reactivity:	Human, Mouse, Rat
Host:	Rabbit
Isotype:	IgG
Clonality:	Polyclonal
Immunogen:	Synthetic peptide, corresponding to amino acids 281-330 of Human PSMD11.
Specificity:	PSMD11 (R310) polyclonal antibody detects endogenous levels of PSMD11 protein.
Formulation:	Rabbit IgG, 1mg/ml in PBS with 0.02% sodium azide, 50% glycerol, pH7.2
Concentration:	1mg/ml
Conjugation:	Unconjugated
Storage:	Store at 4°C short term. Aliquot and store at -20°C long term. Avoid freeze-thaw cycles.
Stability:	1 year
Predicted Protein Size:	~ 46 kDa
Gene Name:	proteasome 26S subunit, non-ATPase 11
Database Link:	<a href="#">Entrez Gene 5717 Human O00231</a>
Background:	PSMD11 (proteasome (prosome, macropain) 26S subunit, non-ATPase, 11), also known as S9, Rpn6 or p44.5, is a 422 amino acid protein that contains one PCI domain and functions as a regulatory subunit of the 26S proteasome, playing a role in the ATP-dependent degradation of ubiquitinated proteins. The gene encoding PSMD11 maps to human chromosome 17, which comprises over 2.5% of the human genome and encodes over 1,200 genes.
Synonyms:	26S proteasome regulatory subunit 9; 26S proteasome regulatory subunit S9; PSMD 11; Rpn6
Note:	For research use only, not for use in diagnostic procedure.

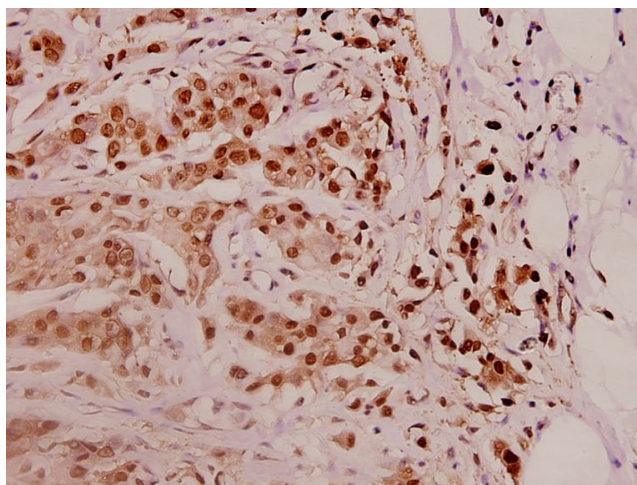


[View online »](#)

## Product images:



Western blot (WB) analysis of PSMD11 (R310) polyclonal antibody at 1:500 dilution  
Lane1:HEK293T whole cell lysate(40ug)  
Lane2:PANC1 whole cell lysate(40ug) Lane3:LO2 whole cell lysate(40ug) Lane4:H9C2 whole cell lysate(40ug) Lane5:CT26 whole cell lysate(40ug)



Immunohistochemistry (IHC) analyzes of PSMD11 (R310) pAb in paraffin-embedded human breast carcinoma tissue at 1:100.