

## Product datasheet for TA392856S

### NRP2 Rabbit Polyclonal Antibody

#### Product data:

Product Type:	Primary Antibodies
Applications:	WB
Recommended Dilution:	WB: 1:500~1:1000
Reactivity:	Human, Mouse, Rat
Host:	Rabbit
Isotype:	IgG
Clonality:	Polyclonal
Immunogen:	Synthetic peptide, corresponding to amino acids 341-390 of Human Neuropilin-2.
Specificity:	Neuropilin-2 (M373) polyclonal antibody detects endogenous levels of Neuropilin-2 protein.
Formulation:	Rabbit IgG, 1mg/ml in PBS with 0.02% sodium azide, 50% glycerol, pH7.2
Concentration:	1mg/ml
Conjugation:	Unconjugated
Storage:	Store at 4°C short term. Aliquot and store at -20°C long term. Avoid freeze-thaw cycles.
Stability:	1 year
Predicted Protein Size:	~92 kDa
Gene Name:	neuropilin 2
Database Link:	<a href="#">Entrez Gene 8828 Human O60462</a>
Background:	Neuropilin is a type I transmembrane receptor that has been implicated in aspects of axon growth and guidance and has been shown to act as a high affinity receptor for class III semaphorins and vascular endothelial growth factor (VEGF). A closely related protein, neuropilin-2, shares a common domain structure and significant homology with neuropilin and also acts as a receptor for the class III semaphorins and VEGF. Both neuropilins are involved in regulating many physiological pathways including axonal guidance and angiogenesis, however they exhibit differential expression in the adult vasculature. Neuropilin-2 is polysialylated and expressed on the surface of dendritic cells. It is also expressed by venous and lymphatic endothelium. Neuropilin is expressed predominantly by arterial endothelium.

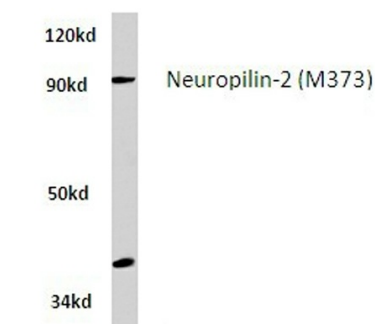


[View online »](#)

**Synonyms:** Neuropilin-2; NRP2; Vascular endothelial cell growth factor 165 receptor 2; VEGF165R2

**Note:** For research use only, not for use in diagnostic procedure.

**Product images:**



PC12 whole cell lysate  
Neuropilin-2 (M373) pAb at 1:500 dilution

Western blot (WB) analysis of Neuropilin-2 (M373) pAb at 1:500 dilution Lane1:PC3 whole cell lysate(40ug) Lane2:HEK293T whole cell lysate(20ug) Lane3:A549 whole cell lysate(20ug) Lane4:PC12 whole cell lysate(40ug) Lane5:The Kidney tissue lysate of Mouse(40ug)