

## Product datasheet for **TA392855M**

### CD61 (ITGB3) Rabbit Polyclonal Antibody

#### Product data:

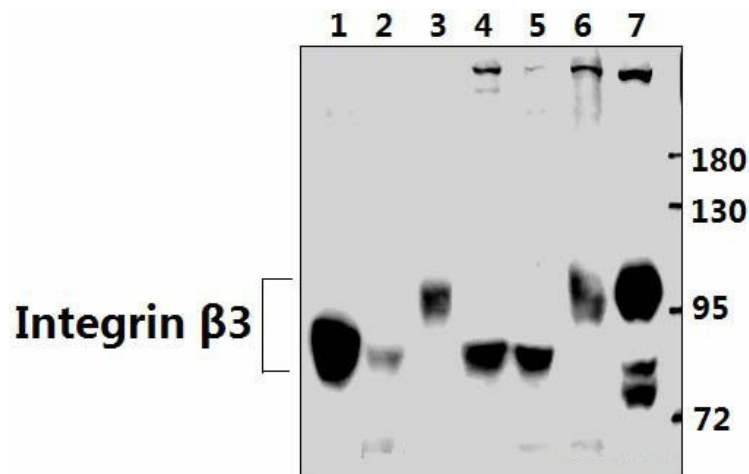
Product Type:	Primary Antibodies
Applications:	WB
Recommended Dilution:	WB: 1:500~1:1000 IHC: 1:50~1:200
Reactivity:	Human, Mouse, Rat
Host:	Rabbit
Isotype:	IgG
Clonality:	Polyclonal
Immunogen:	Synthetic peptide, corresponding to amino acids 751-800 of Human Integrin $\beta$ 3.
Specificity:	Integrin $\beta$ 3 (S778) polyclonal antibody detects endogenous levels of Integrin $\beta$ 3 protein.
Formulation:	Rabbit IgG, 1mg/ml in PBS with 0.02% sodium azide, 50% glycerol, pH7.2
Concentration:	1mg/ml
Conjugation:	Unconjugated
Storage:	Store at 4°C short term. Aliquot and store at -20°C long term. Avoid freeze-thaw cycles.
Stability:	1 year
Predicted Protein Size:	~ 87, 110 kDa
Gene Name:	integrin subunit beta 3
Database Link:	<a href="#">Entrez Gene 3690 Human P05106</a>
Background:	Integrins are heterodimers composed of noncovalently associated transmembrane $\alpha$ and $\beta$ subunits. The 16 $\alpha$ and 8 $\beta$ subunits heterodimerize to produce more than 20 different receptors. Most Integrin receptors bind ligands that are components of the extracellular matrix, including Fibronectin, Collagen and Vitronectin. Certain Integrins can also bind to soluble ligands such as Fibrinogen, or to counterreceptors on adjacent cells such as the intracellular adhesion molecules (ICAMs), leading to aggregation of cells. Ligands serve to cross-link or cluster Integrins by binding to adjacent Integrin receptors; both receptor clustering and ligand occupancy are necessary for the activation of Integrinmediated responses.


[View online »](#)

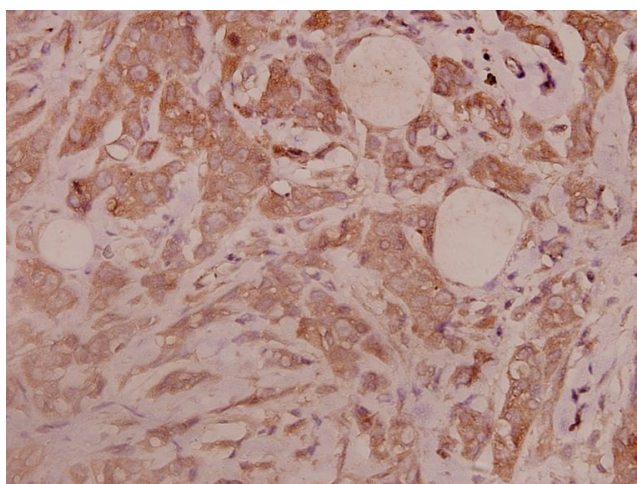
**Synonyms:** CD61; CD\_antigen=CD61; GP3A; GPIIIa; Integrin beta-3; ITGB3; Platelet membrane glycoprotein IIIa; Short name=GPIIIa

**Note:** For research use only, not for use in diagnostic procedure.

**Product images:**



Western blot (WB) analysis of Integrin  $\beta$ 3 (S778) pAb at 1:500 dilution Lane1:BV2 whole cell lysate(40ug) Lane2:RAW264.7 whole cell lysate(40ug) Lane3:The Uterus tissue lysate of Rat(40ug) Lane4:THP-1 whole cell lysate(40ug) Lane5:A549 whole cell lysate(40ug) Lane6:PC3 whole cell lysate(40ug) Lane7:U-87MG whole cell lysate(40ug)



Immunohistochemistry (IHC) analyzes of Integrin  $\beta$ 3 (S778) pAb in paraffin-embedded human breast carcinoma tissue at 1:100.