

Product datasheet for **TA392851S**

Neuropilin 1 (NRP1) Rabbit Polyclonal Antibody

Product data:

Product Type:	Primary Antibodies
Applications:	WB
Recommended Dilution:	WB: 1:500~1:1000 IHC: 1:50~1:200
Reactivity:	Human, Mouse, Rat
Host:	Rabbit
Isotype:	IgG
Clonality:	Polyclonal
Immunogen:	Synthetic peptide, corresponding to amino acids 501-550 of Human Neuropilin-1.
Specificity:	Neuropilin-1 (D525) polyclonal antibody detects endogenous levels of Neuropilin-1 protein.
Formulation:	Rabbit IgG, 1mg/ml in PBS with 0.02% sodium azide, 50% glycerol, pH7.2
Concentration:	1mg/ml
Conjugation:	Unconjugated
Storage:	Store at 4°C short term. Aliquot and store at -20°C long term. Avoid freeze-thaw cycles.
Stability:	1 year
Predicted Protein Size:	~ 130 kDa
Gene Name:	neuropilin 1
Database Link:	Entrez Gene 8829 Human O14786
Background:	Neuropilin 1 is a membrane-bound coreceptor to a tyrosine kinase receptor for both Vascular Endothelial Growth Factor and Semaphorin family members. Neuropilin 1 plays versatile roles in angiogenesis, axon guidance, cell survival, migration, and invasion.
Synonyms:	CD_antigen=CD304; Neuropilin-1; NRP; NRP1; Vascular endothelial cell growth factor 165 receptor; VEGF165R
Note:	For research use only, not for use in diagnostic procedure.

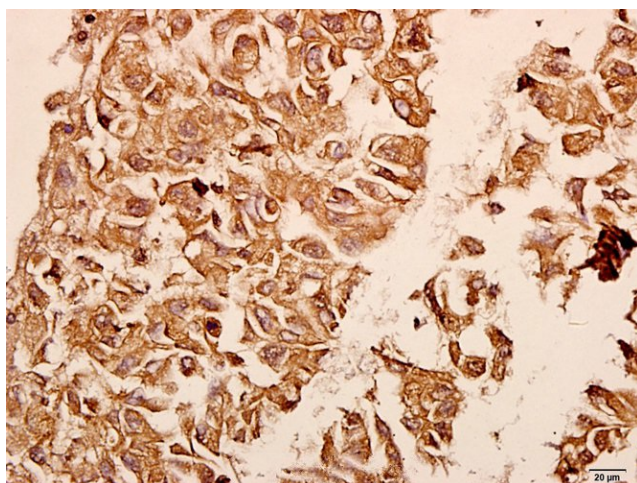


[View online »](#)

Product images:



Western blot (WB) analysis of Neuropilin-1 (D525) pAb at 1:1000 dilution Lane1:L02 whole cell lysate(20ug) Lane2:A549 whole cell lysate(20ug) Lane3:PC3 whole cell lysate(20ug) Lane4:The Heart tissue lysate of Rat(40ug) Lane5:The Brain tissue lysate of Mouse(40ug)



Immunohistochemistry (IHC) analyzes of Neuropilin-1 (D525) pAb in paraffin-embedded human breast carcinoma tissue at 1:50.